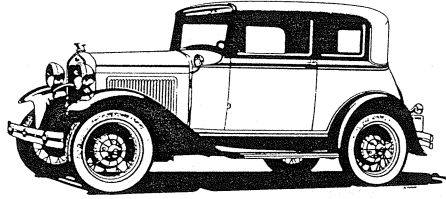


# Victoria Association



VOLUME 8

NUMBER 2

NEWSLETTER

APRIL

1993

## DUES

I want to apologize for not putting the price of the dues in the October newsletter-I forgot. The dues has been \$12 for about five years.

Each year it is a struggle to get the dues from some of the members. We did well in the number renewing. Including new members, we are down only 13 members from last year. Usually, we make this up with new members during the year. Membership has been running 165 the past two years.

I thank those of you that pay early, it sure makes my job easier.

## THANKS DUE

Many members wrote this year to tell me how much they like the newsletter and how much they appreciate my work. This means a lot to me and makes my efforts worth while. One thing the general membership does not see is all of the letters and phone calls I answer. I help many Victoria members with their problems. I answer all calls and letters. If ever I didn't answer someone, it was because I didn't get their letter.

## PATCHES AND SHIRTS

The patches are in and I have mailed all back orders of patches and shirts. The patches came out very nice. Many of the members

purchasing them have told me how nice they are. Remember, these shirts and patches are sold to the members at cost. No profit involved. "T" shirts are \$6.50, Golf shirts are \$15.00 and patches are \$3.00 including postage.

## A & L WINDWING BRACKETS

Mel Hodde sent a pair of A & L wind wing brackets for me to look at. These are well made brackets and will work fine on the Victoria and A-400. You must remember, they are reproduction and should not be intended for show cars. If you look at the drawing at the bottom left of page 4 of the January 1993 newsletter, you will see what the A & L brackets look like. They are marketed as Fulton design. Now if you refer to the June 1988 issue of the newsletter, page 2, you will see a photo of the original windwing brackets. There is a difference. My originals say Graham Clear Vision Ventilator. I do not know what the original Fulton brackets look like but I'm sure they are like the A & L reproductions. There were several different brackets made for the Victoria. The A & L brackets are great for your driver.

Ernie Smith writes, "I have something that is rare about my 31 Victoria. In my all original tool kit, my tire pump is the same as a 32. Our car came from Lowell, Massachusetts". Have you heard of any others like this one? Our Victoria was built in May, 1931.

## SLIDING SEAT TRACKS

While looking for something in my file, I came across the name and address of a fellow that manufactures the sliding seat tracks. I do not know if he still does or not. If any of you are interested, you can call or write to: Don Babb, Classic Mfg., Co., 2620 W. M-8, Lancaster, CA 93536 (805) 947-5460. If any of you check this out, let me know so I can up-date the members.

## FAN BALANCER SHAFT

NORM CROSS of Burton, Ohio wrote inquiring about the shaft used on Rob Mills balancer. In this newsletter, you will find two drawings by Rob Mills, one is the balancer and the other is of the shaft. (Note from the editor. I had a friend machine an identical shaft for use with my propeller balancer).

If you buy the propeller balancer or make one as per Rob Mills' plans, you will need to

2

machine a shaft to mount the fan on the balancer. Try it, you'll like it.

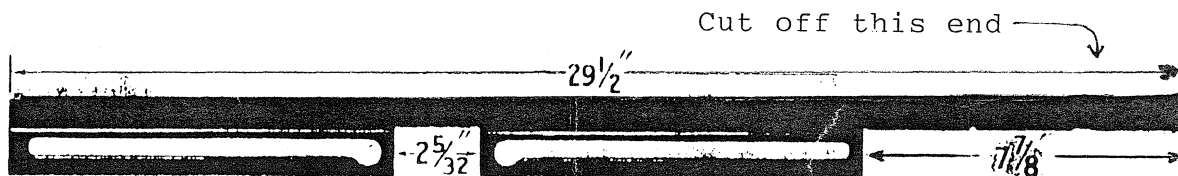
## LEATHERBACK WOOD FRAME

If any of you need to see a wood frame for the Leatherback, please refer to the photo included in the October '88 newsletter shown on page 4.

A member is working on his leatherback and has sent a picture of his frame, however, I am waiting for more photos and will run this as a feature in a future newsletter.

## DOOR GLASS CHANNEL

John Hash writes that you can make the door glass channel by purchasing the 32 window channel (reproduction) and cut it down from  $29\frac{1}{2}$  to the proper length of  $27\frac{5}{8}$ . Everything is the same except the space between the bottom slides. He says it works fine. (See attached drawings).



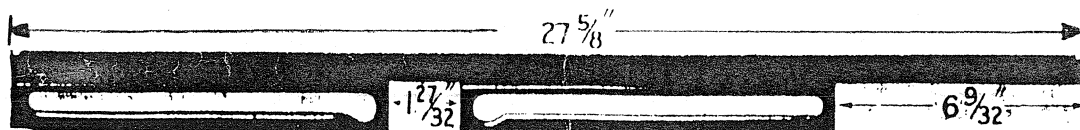
b-55962

Channel (door glass) and plate any. R. H. H 55, H 150, H 400

B-55963

to L. H.

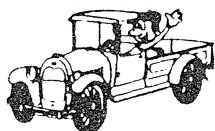
## 1932 CHANNEL



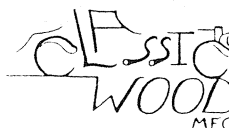
A-190962-A

Channel (door glass) any. R. H. 150-A, 400-A

## VICTORIA CHANNEL



HARRY'S  
EARLY FORD PARTS



PHONE  
(919) 691-1344

1006 N. RALEIGH ST. GREENSBORO, NC 27405

STEVE CANNON

T.A & V-8 FORD  
T SERIES MG

CHEVROLET  
MG-A

ANTIQUE AUTOMOTIVE WOOD PRODUCTS

Bill & Millie Harry

8175 WEST EVANS CREEK RD.  
ROGUE RIVER, OR 97537  
(503) 582-0526

ORDER DESK  
1-800-833-2580

FOR SALE

MALE REAR SEAT CATCHES, I have made five of these and will take \$15 each including postage. If more members want this item I will have more made. Let me hear from you members - Bill Bond.

(ad continued below)

FRONT SEAT HINGES FOR EARLY VICTORIA'S

Mr. Charles Mc Keown has been nice enough to loan me his only early Victoria seat hinge to reproduce for those of you that need them. I have finally located the proper tubing and strap material to make these. The price will depend on how many orders I get. I would like to do all of these at once, but will make more later as needed. Contact me on these and I will make them.

(ad continued below)

WANTED \* WANTED

Scroll left door handle with lock that is restorable.

(I want to remind you that the Victoria had the lock on the right door only. Bill, Did you mean the right door handle? Editor).

Also wanted: TRC2B or TRC2A vacuum windshield wiper motor for the Victoria. Must be repairable. This is a TRICO motor. The TRC2B is chrome and the TRC2A is black. (The Victoria uses the black motor, ed.).

Bill Bond, 1040 Old Squaw Pass, Evergreen, CO (303) 670-3283.

FOR SALE \* FOR SALE

Bert's Model A Ford Center has a left Victoria

door window frame. Also a complete set of window garnish moldings as well as the header panel (above windshield), dash rails, windshield frames, and windshield post moldings. We have a pair of the frame angle brackets that receive the body mounting bolt just behind the front seats, \$40 the pair, these mount outside of the frame and are shown on page 9 & 11 of the October 91 (Vol. 6 No. 4) newsletter. If your Victoria does not have these, you need these brackets. Also many other Victoria parts. Contact us for your needs.

Bert's Model A Ford Parts, 3560 Chestnut Pl., Denver, CO. 80216 - 800 321-1931, ask for Steve, and be sure to tell him the Victoria Association sent you.

-----  
WANTED \*\*\* WANTED

I need the curved tack rail that goes from  $\frac{1}{4}$  window to  $\frac{1}{4}$  window and above the rear window of the Steelback Victoria. This is what you tack the rear upholstery to as well as the headliner.

I also need the passenger seat brackets that go with the sliding drivers seat. (Same as Charlie Viosca's ad on page 12 of the January newsletter (Vol. 8, No. 1).

This is for John Rios however if you have these parts, please contact Perry Ancell, 1021 Laguna, Denton, TX 76201, (817) 566-2463.

-----  
WANTED \* WANTED

I need the early passenger seat and brackets.

I also need both door window frames.

Fred Cassin, 15 Park Circle Dr., Fairport, NY., 14450-2534. (716) 223-1641.  
-----

Rob Mills makes and sells the rear male seat catch \$22.00, he also makes a 13/32 box end wrench to fit the original fuel adjusting needle housing (carburetor) \$5.00.

I made some nice exterior mirror brackets both left and right sides. They are located on the top door hinge and slant upwards for better viewing. They are of brass and chrome plated. If any of you are interested in these mirrors, let me know and if there is enough interest, I will consider making them for sale. Let me know.

Rob is the member that made the nice fan balancer, see photo in last newsletter; the plans are included in this newsletter. Rob Mills, 130 Sub Station, Temperance, MI. 48182 (313) 847-1884.

---

WANTED \* WANTED

I am in need of a right Victoria door that is complete and in excellent condition.

Nick Hasselkus, 4818 Nomad Dr., Woodland Hills, CA 91364 (818) 340-4114.

---

Even though there are members that place advertisements for parts for sale or wanted, and do not get replies, there are many we help through the ad's. Some of the common parts such as rear spare tire carrier, are not in great supply, there are some like the rear apron and floor pan that are scooped up very quickly. We are constantly getting new members so run your ad's several times over the year and you will find someone interested.

Remember, it's free, what do you have to lose?

---

I have one original rear seat catch for sale and I will sell it to the first one to call, \$25.00, John Brutcher, (315) 638-2825.

---

FOR SALE \* FOR SALE

Big Flats Rivet Co., 639 Suny Dell Cir., Horseheads, NY 14845 (607) 562-3501, has all of the rivets needed for the Model A and then some. They also have rivet tools and rivet kits. Write for a catalog. (I submit this info for those members that do not know where to get the proper rivets for your Model A Editor).

---

WANTED \* WANTED

Victoria body with doors any condition WANTED. Please contact: Jim Ryan, 2318 Rolling Pines Ave., Durham, NC 27703 (919) 596-4993.

---

INTERESTED IN A NEW "A" BLOCK?

For those of you that might be interested in a new Model A engine block, there is one being made. This is an all new aluminum block with 5 main bearings and Chevrolet bearings and seals. It's not cheap but if interested at \$3,950 you can contact Donovan Engineering, 2305 Border Ave., Torrance, CA 90501. (Submitted by David Ziegler).

---

FOR SALE \* FOR SALE

I have two right and two left door latch units (re-built) for sale. Roy Reger, 11684 East Bayand Dr., Aurora, CO. 80012-1247 (303) 343-3331.

---

WANTED \* WANTED

5

ITEMS RESTORED

I need an original radiator cap and a tire pump for my '31 Victoria.

Walt Ramsey, 745 Hilltop Ave., Kent, WA 98031, (206) 852-3228.

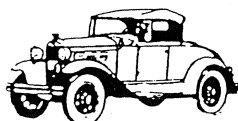
I restore 30-31 gas caps and bumper clads, stainless only if they can be saved at all or any part inners or outers. I do have show quality caps on hand and have other Victoria parts like window regulators for doors; I repair them too. John Hash, 33209 177th Pl. SE, Auburn, WA 98002, (206) 854-2613.

*Visor Brackets*

*Floor Plates*

William H. Bond

*Restorations*



*Buy  
Sell  
Trade*

Specialty Parts

1040 Old Squaw Pass  
Evergreen, Colorado 80439

(303) 670-3283

CHROME BEAUTY RINGS  
\$45.00 Each + S&H



**PAPE PARTS**  
478 TURNER ROAD  
WILLIAMSON, GA 30292

Hours 9:00-3:00 - Mon - Sat  
Information 404-228-7677  
Orders Only 1-800-421-0696  
MARSHALL & SUSIE PAPE

MODEL A



Have You Driven Your Model A Lately  
FULL LINE OF MODEL "A" PARTS  
STOCKING SIMPLY THE BEST



THE TIRE THAT WAS ORIGINAL  
ON OVER FIFTY PERCENT OF THE  
ANTIQUE AND CLASSIC CARS  
Formerly R. T. McDANIEL

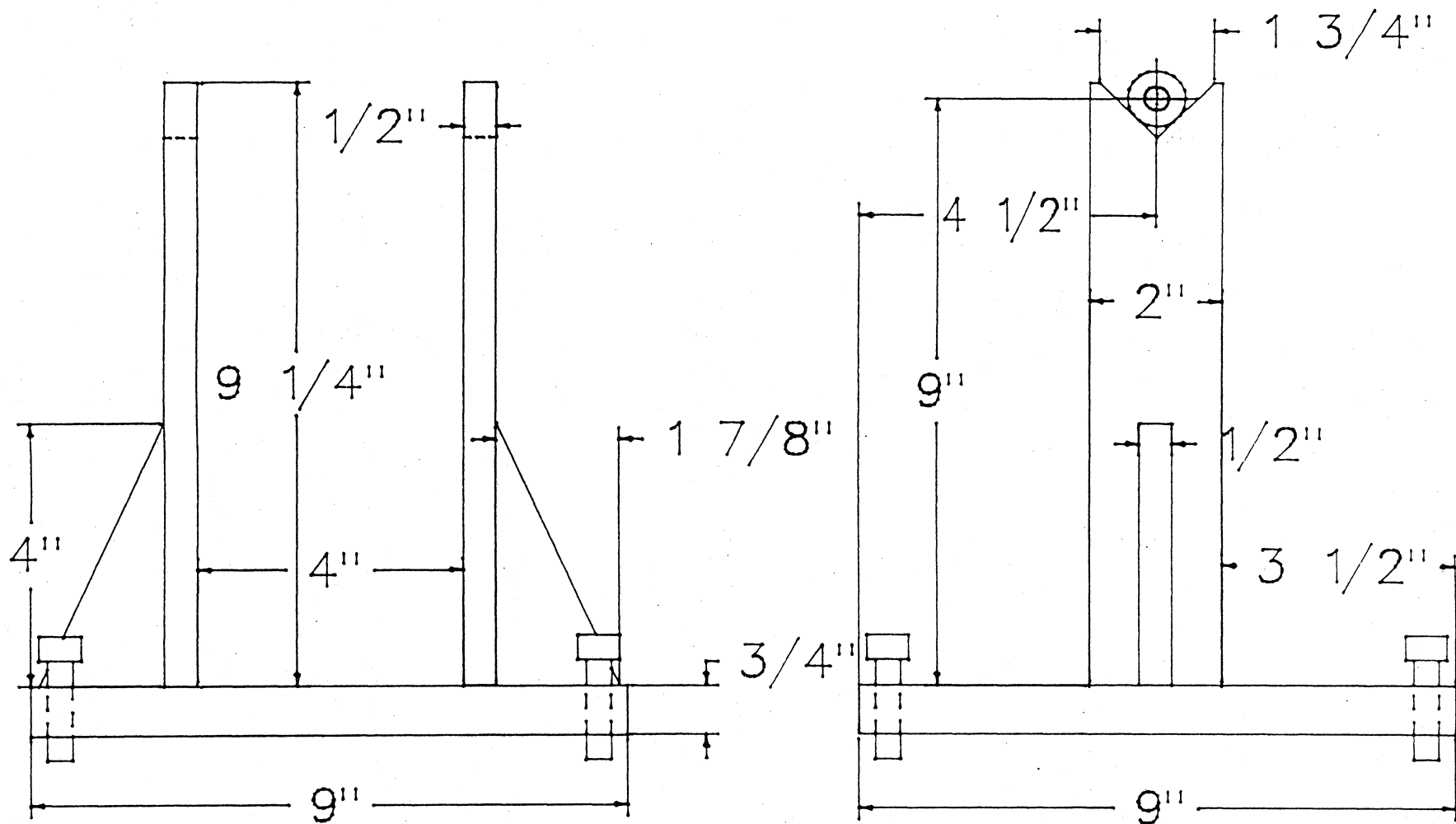
BOB MOORE OF GERMANTOWN, TN. SENDS THE FOLLOWING INFORMATION:

THE IDEA ABOUT A PLASTIC FLASHLITE LENS IN TAILITE WON'T WORK FOR RUNNING LITES, BRAKE LITES ONLY. TOO MUCH HEAT, THE LENS MELTED IN A 12V SINGLE BULB TAIL LITE (NOT MODEL A).

DRILLING HOLES IN RUBBER - AN EMPTY PISTOL CARTRIDGE (.25, .45, 9MM) DOES A NICE JOB. CHUCK CLOSED (PRIMER) END OF EMPTY CASE IN DRILL AND GO TO IT. REMOVE PLUG FROM INSIDE CASE BEFORE NEXT HOLE.

MY LATEST MODEL A HAS A CARBURETOR MADE BY TOKYO CARBURETOR CO. LTD. 11/30 (ON DATA PLATE). IT APPEARS TO BE A ZENITH CASTING BUT DOES HAVE SOME DIFFERENCES. IF YOU KNOW ANY CARB EXPERTS THAT WANT TO LOOK AT IT, LET ME KNOW. THE CAR CAME FROM BRAZIL, SO I HAVE NO IDEA HOW COMMON THIS ORIENTAL MODEL IS IN THE USA.

DOOR GLASS WINDOW CHANNELS - I HAD TO REPLACE A PORTION OF WINDOW CHANNEL AND HAD SOME DIFFICULTY FINDING A SECTION TO WELD IN. APPARENTLY THE CHANNEL WITH THE KEYHOLE SHAPED BRACKET IS NO LONGER AVAILABLE. I FOUND SOME NOS CHANNELS FROM A 46-48 FORD TUDOR WHICH HAVE THE SAME CROSS SECTION AS THE VICTORIA CHANNELS. WORKED GOOD & THE PRICE WAS RIGHT.



HAS A BUBBLE LEVEL IN THE CENTER OF BASE TO LEVEL

3/8-24 BOLTS LOCATED 1/2 FROM EDGE OF BASE

USED BEARINGS WITH 3/8 ID AND 7/8 OD

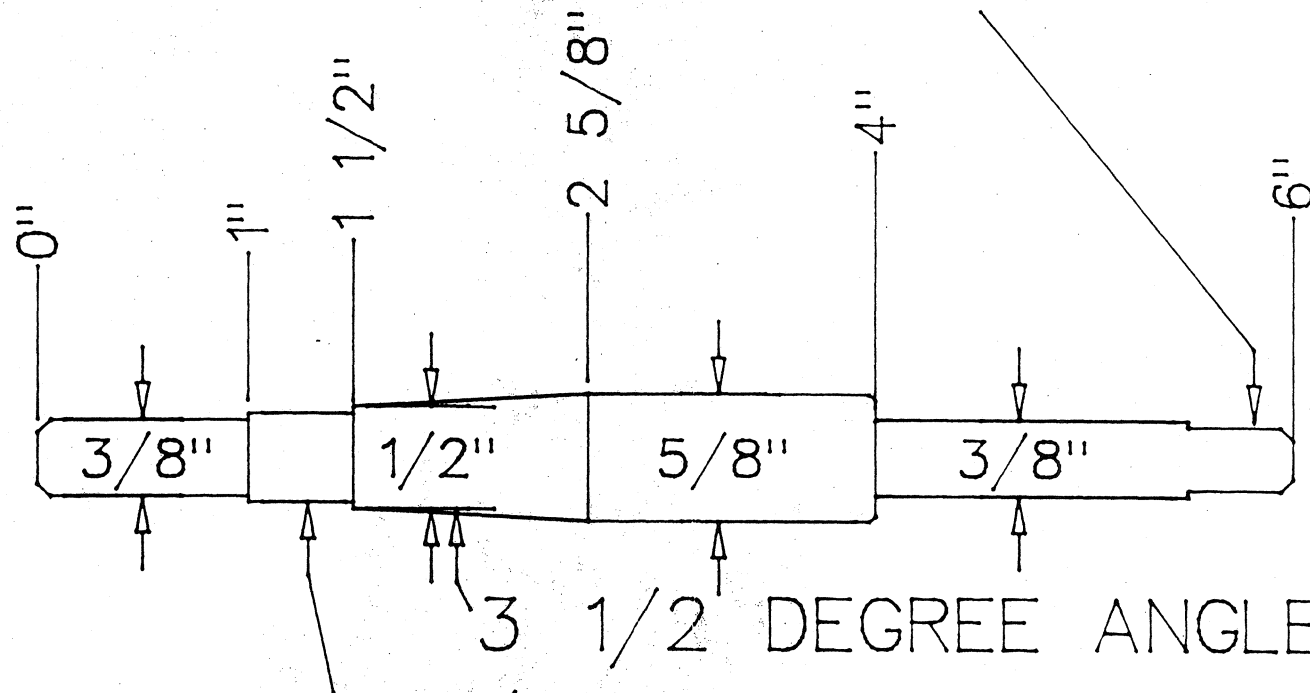
USED 1/4 BOLTS TO HOLD TOGETHER

# MODEL A FAN BALANCER

ROB MILLS

1-30-93

# 5/16 WRENCH FLATS



3 1/2 DEGREE ANGLE  
7/16-20 THREAD

MODEL A FAN BALANCER  
SHAFT  
ROB MILLS

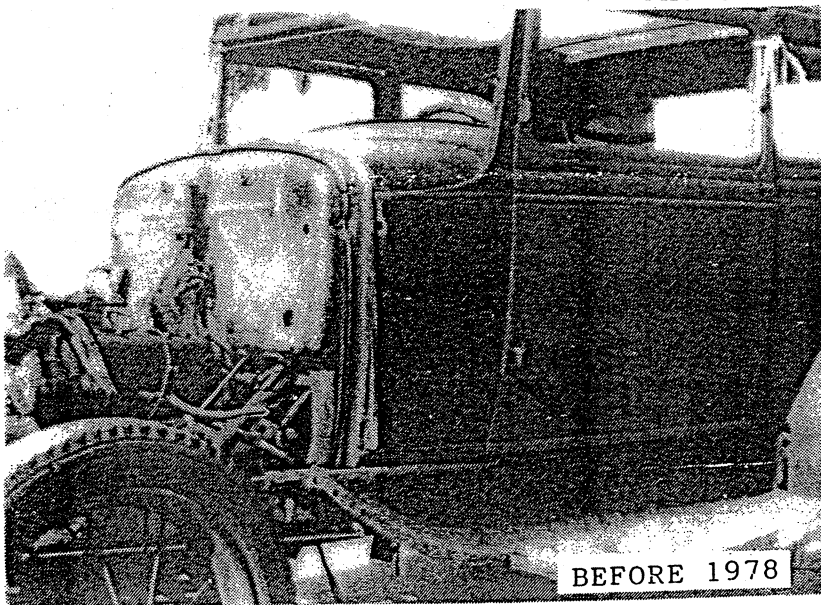
The car was purchased here in Minnesota in the fall of 1978. Work commenced in the spring of 1980 at a very slow pace. Strangely enough the frame and engine number matched (A-3985912) making it a very early Victoria car, September 1930. The Murray body tag is No. M 190A 2826. The original color was black with a soft top. Except for a door and two fenders the sheet metal wasn't too bad and with patience the original replacements turned up. The frame and sub-frame were also usable.

By 1984 the chassis was complete and work had started on the body. The hard part was still to come - painting, interior, and the top. Since the original true color and texture of the original top material is still in question, a light tan textured material was chosen as being the closest to photo's of original Victorias. Ford maroon was the selected color for it's richness, along with vermillion wheels and striping. The one non-standard feature are the white-wall tires, only because the black and maroon made the car a little dull. The final finishing touches came in the summer of 1990.

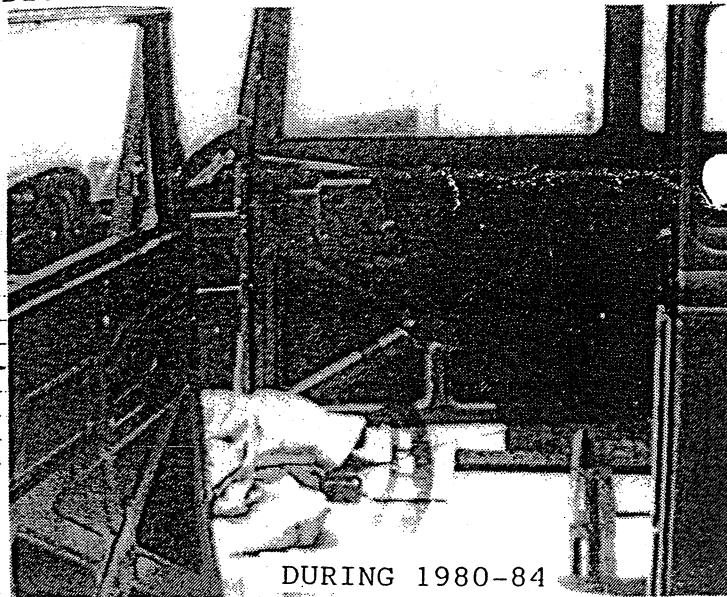
Having only 600 miles recorded, the car is still quite stiff, and except for a few minor problems it seems to be running fine. Hopefully, many years of enjoyment lie ahead.

Dick Punchard

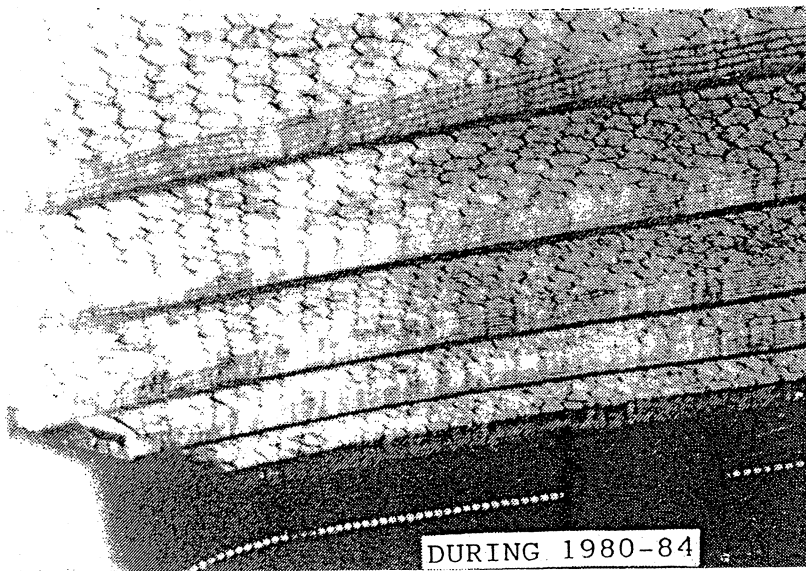
BELOW AND ON NEXT PAGE ARE  
PHOTOS OF Dick's Victoria.



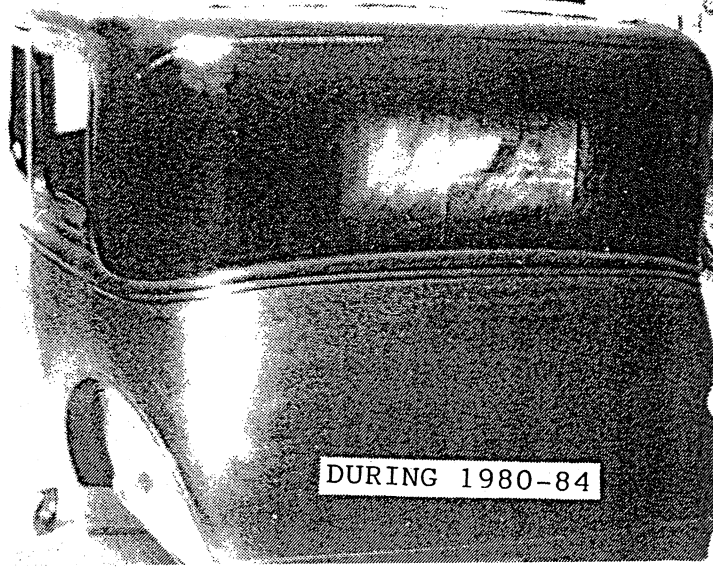
BEFORE 1978



DURING 1980-84

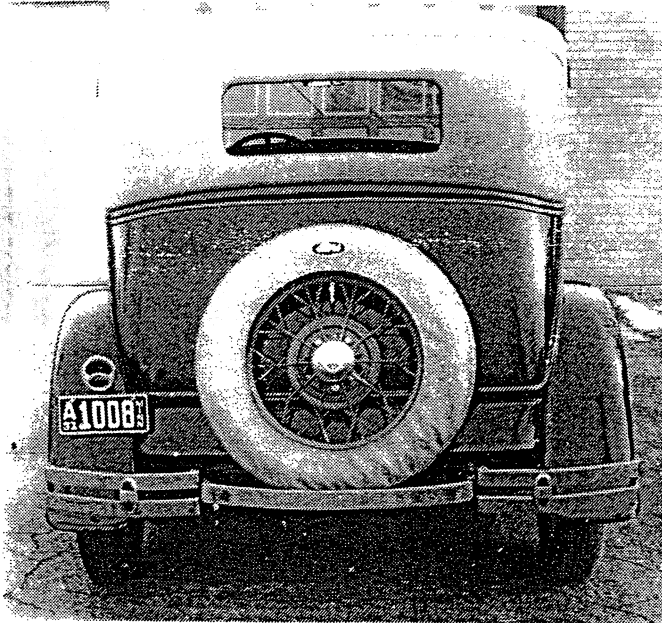
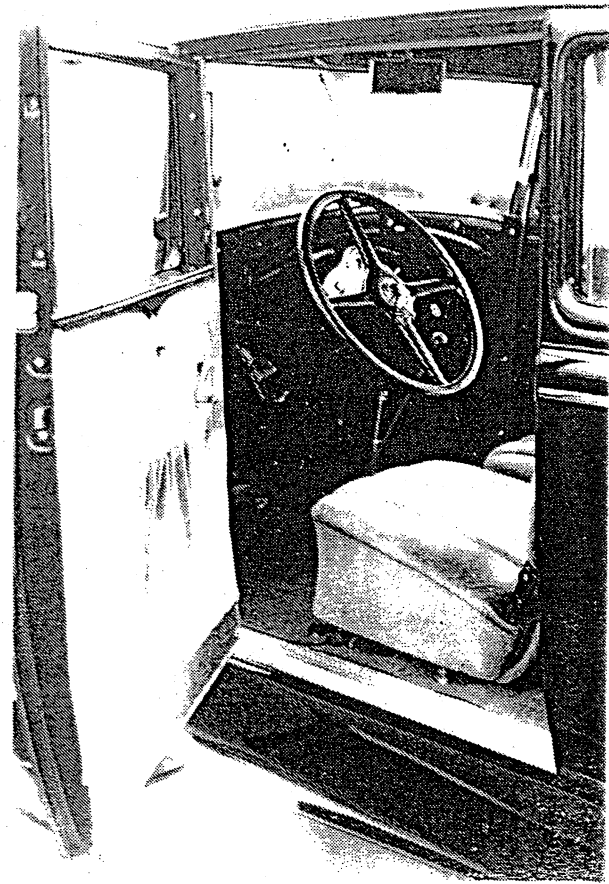
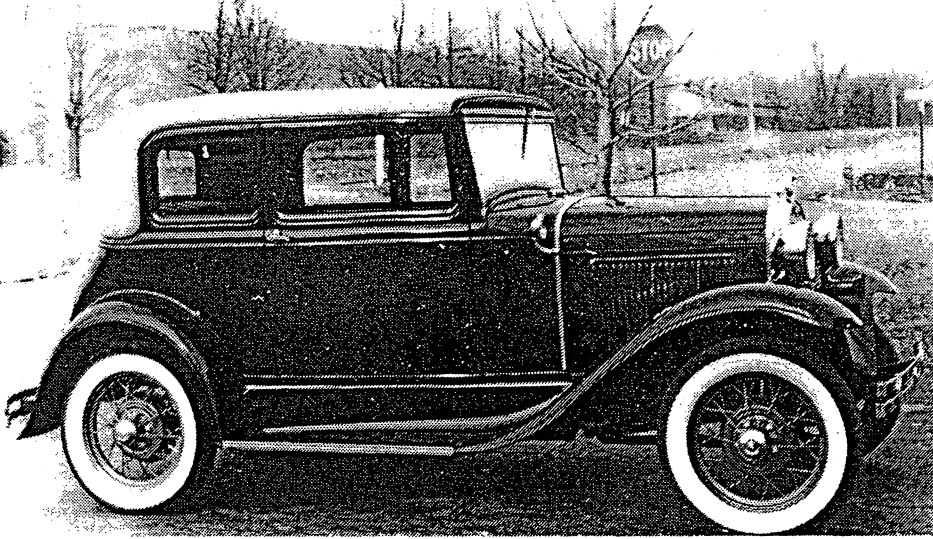


DURING 1980-84



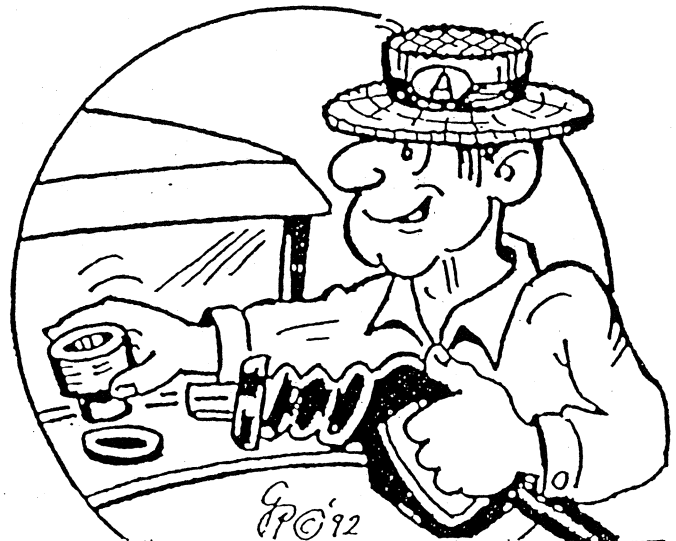
DURING 1980-84

ALL THREE OF THESE PHOTOS ARE  
AFTER 1990. RICHARD, THANKS  
FOR SHARING THIS WITH US.



THIS CARTOON AND TIP SENT IN BY  
GORDON BERRY OF NORTH KINGSTOWN, RI.

## HENRY "A" SEZ...



### ARM REST BRACKETS

Al Parker asks where he can get the arm rest brackets. At this writing, I do not know of a source however, they are easy to make. They are a piece of strap about  $\frac{1}{2}$  in wide and about  $2\frac{1}{2}$  to 3 inches long. They are bent about the center into an "S" shape and it has two holes drilled to allow you to screw it to the wood cross member below the  $\frac{1}{4}$  window. The arm rest slides on-to the bracket and is secured at the back by a wood screw. (This is behind the rear seat back).

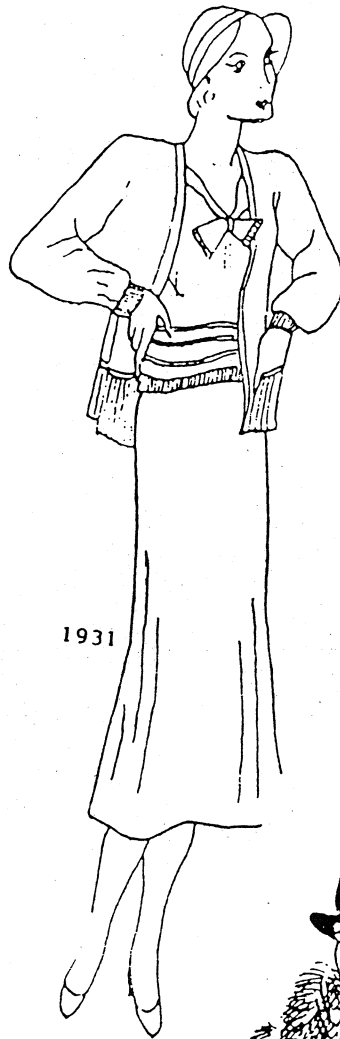
IF YOU'RE HAVING TROUBLE FILLING  
UP THE GAS TANK OF YOUR "A" WITH  
THE NEW-FANGLED GAS NOZZLE,  
FIRST INSERT A 1-1/4" PVC FITTING.  
IT'LL FILL RIGHT UP!

**10** THIS NICE CHART SHOWS THE MODIFICATIONS TO MY Victoria as was done to my 1929 Roadster pickup for the Great American Race. The chart was done by Fred Cassin - thanks Fred.

Modification	Pertinent Information
Modern Fan	Davis Antique Ford, 800-252-1928
Recored Radiator	4 lbs pressure. 17 Fins per inch. Modern Core. Local Radiator Shop.
Water Pump	Modified Pump with modern bearings & rear carbon seals Bert's Model A Ford Center, 3560 Chestnut Place, Denver, CO 80216 303-293-FORD (3673)
Electric Fuel pump	Local Auto Parts Store
Downdraft Manifold	Auto Care & Restoration, 3824 Alma Ave, Redding, CA 96002 916-222-0228 Pete Westler
Stromberg 97 Carb	Racecars in Retrospect, PO Box 3116, Alliance, OH 44601 216- 823- 6167 Jeff Martin
Air Filter	Local Auto Parts Store
Master Switch in fuel line.	Local Auto Parts Store
Modern ignition switch	Local Auto Parts Store (NAPA)
12 Volt Sys: Neg. Grd.	Use a good quality battery.
Alternator	See Ampmeter below
Ampmeter	With Alternator use 0-60 AMPS. (See Auto Care & Restoration above)
Fuse Box	Local Auto Parts Store
Halogen Head Lights	Harry's Early Ford Parts, 8175 West Evans Creek Road, Rouge River, OR 97537. 503-582-0526. Order Desk: 1-800-833-2580
Right Tail light	Swap meets or modify left bracket (also sold in some catalogs)
Turn Signals	Bratton's, 9410 Watkins Road, Gaithersburg, MD 20882 301-253-1929 Order Desk: 1-800-255-1929
Center Brake Light	Local Auto Parts Store
Mallory Distributor with dual points.	Auto Care & Restoration above. 2 point model. There also is an electronic model available but it is not legal for Great American Race.
Modern Shocks	Rear: Mercury Comet or Full size Buick fronts. Front: Chrysler Diplomat 77-89 fronts.
Hydraulic Brakes: 1940	Clings Mfg., 1019 S 52nd Street, Tempe, AZ 85281 602-968-1778. (Recently added a Chevettte Master Cylinder, split front, rear with power booster that works great!
Overdrive	Your choice
Fuel Filter	Large metal case from local Auto Parts Store
16" Wheels & Tires	Your choice
Seat Belts	Local Auto Parts Store
Fire Extinguisher	Local



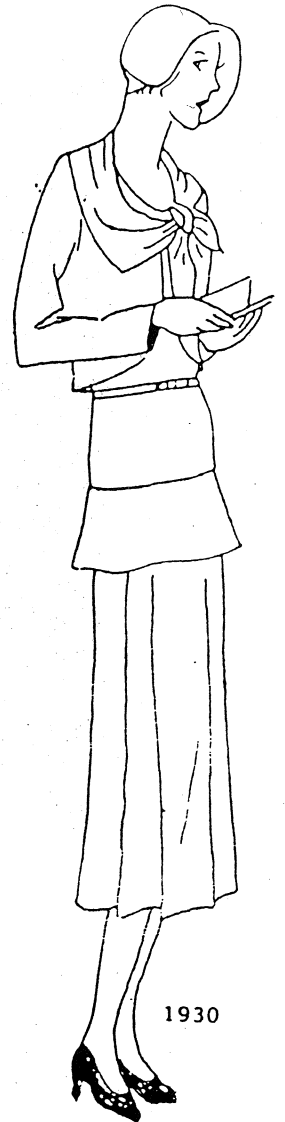
1929



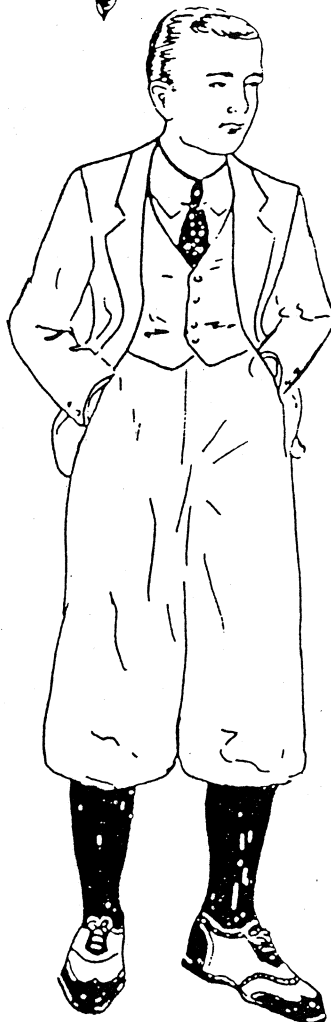
1931



1929



1930



1928 - 1931



1928 - 1931

Genuine imported amber bead necklace. People of all climes have looked upon amber as very precious. The beads are graduated and faceted, bringing out all the soft lights. In 16-inch or 25-inch lengths. Clasp is of amber, screw style.

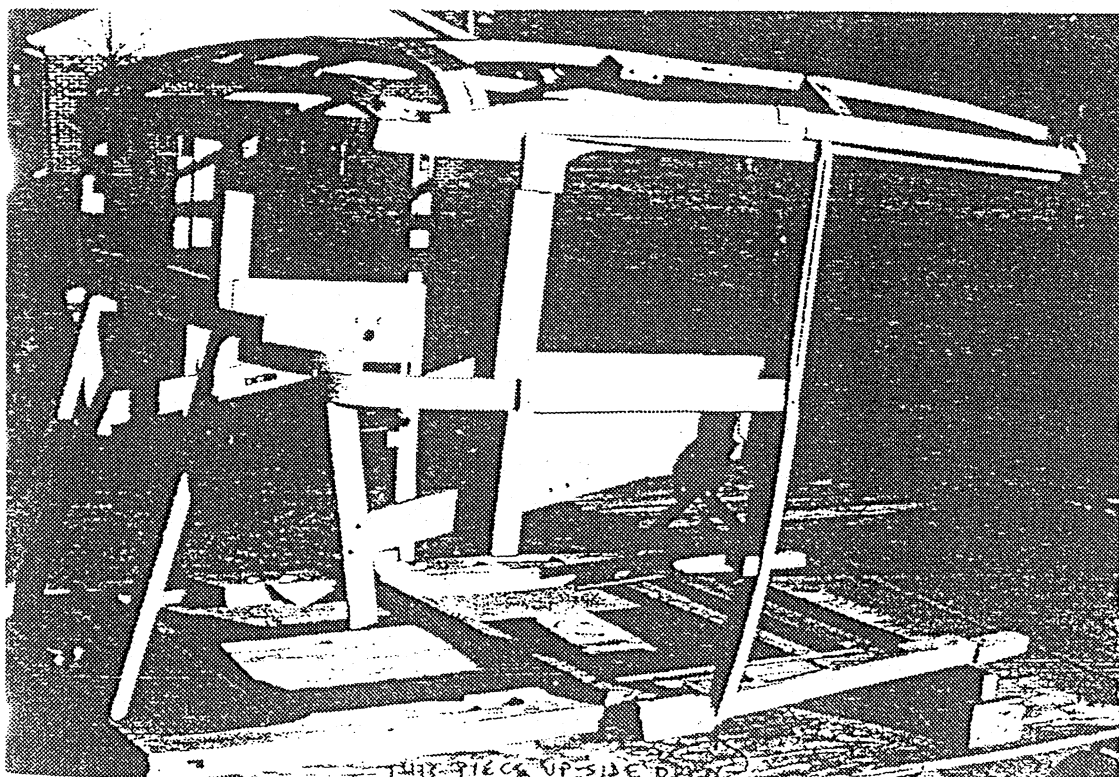
4H4049—25 in. long. \$6.95  
4H4081—16 in. Smaller size beads than illustrated... \$3.85



FIRST CLASS MAIL

68 WINDJAMMER • FRISCO, TEXAS 75034

*International  
Model of Ford  
Victoria Association*



John, how about sending more photographs so I can run a feature on your car. We can use some good leatherback wood photos. (This was done on a copy machine and is of poor quality).