



International
Model A Ford Victoria Association



Vol. 3 No. 1

VICTORIA NEWSLETTER

February 1988

1

Dear members,

It's newsletter time again. I must tell you that this is the last newsletter you will receive if you haven't paid your 1988 dues. It was due on January 1st. Check your address label and if you have a red line through your name, you haven't paid your dues.

Mr. William Bond (a Victoria Association member) is now making the visor brackets. He sent one to me and I think it is great. I've always said that there is no reason why reproductions can't be made as good as the original. Mr. Bond proves I'm right. He asked what else we need and I suggested that he make the female dove tails and the steering wheel floor board metal covers. He informed me that he would do this. I sent a set of original floor board plates for him to duplicate. He has an original set of dove tails. I am looking forward to seeing these. I guarantee that they will be fine reproductions. (I prefer the word duplications where there's no difference from the original).

If any of you have a horn to trade, Mr. Bond will trade you a set of brackets for a horn. (That's a model A horn).

A good thing, Mr. Bond will sell any part that you may need for the brackets. Possibly, some of you have a bracket that is missing a part or two. Now you can order it from him. He also has the correct visor rivets and you can order these from him. His price on the bracket set is \$80.00, including shipping.

William H. Bond, 1040 Old Squaw Pass, Evergreen, CO. 80439, ph. 303-670-3283.

Several members have asked if I will be in St. Louis for the MARC meet. No, I will go to the MAFCA National meet in Sturbridge this July. It is too hard making both of the meets. We have scheduled a Victoria Association meeting in Sturbridge. It will be Friday, July 15th. between 7 and 9 AM. I hope I can arrange a breakfast. More on this in the next newsletter.

I received a letter from Mr. Thomas Weaver the tour chairman of the Model A Ford Club of Colorado welcoming the Victoria Association to attend the 1989 Regional (high country tour). All of us that attend, will be required to register. More on this later as it is still a year away. I just want those of you that are interested to start making plans to attend.

Some of you may have noticed the letter to the Technical Editor of the Model A News in the November/December issue. It was to Roger Kauffman and by one of our members Mr. Paul Gilliatt. The question was, does the Victoria have a wind seal on the bottom of the door?

The answer was not correct. Mr. Kauffman stated that he looked at several Victorias and it appeared that the upholstery mates with the groove in the sill plate to make a seal. (Not the exact wording of the question and answer). I wrote to Mr. Kauffman and Mr. Gilliatt and advised them that the Victoria definitely has a rubber seal on the bottom of the door. It goes between the upholstery panel and the metal door. If you look at your door, you will notice a small indentation on the bottom. The rubber is held in place by the clips that hold the panel to the door. In my case, I glued the rubber in place. There were no holes in the rubber and after gluing the rubber, I cut the holes with an exacto knife. The rubber is available at your favorite Model A Parts dealer. I got mine from Bratton's.

I am writing this not to be critical of Mr. Kauffman but I want those of you that saw this in the magazine to have the correct information. Mr. Gilliatt later wrote to me that when he took the panel off his door, a piece of old rubber fell out. He had also found the part number in the parts book and it was the same number I quoted to him. I was pleased that the Victoria Association was on the ball in this case. If any of you have any problems or questions, please don't hesitate to write. If I don't have the answer, I'll get it for you. Marshall Lewis and others that have original cars have been very helpful in this area.

CORRECTION

I am enclosing a corrected drawing of the Victoria Visor and bracket that I had in the September 87 newsletter. When I proof read the drawing, I didn't notice that the rivet position was drawn wrong. The enclosed drawing is correct which shows the rivet coming up through the visor and through the bracket then it is peened. Please throw the old drawing away. I wouldn't want it to show up later and someone install the visor on the bracket wrong. I am sorry I didn't notice this. I guess, no matter how hard one tries, there will always be slip ups.

It should be noted that the brackets are mounted 11 inches from the left and right sides measured from the upholstery panels to the center screw in the bracket. The entire unit is mounted to the first bow back from the header.

NEW

I am enclosing a new drawing of the plate that covers the floor board hole where the steering column goes through. As you can see, both of the plates are different than the other model A's. Only the A's with the lowered steering wheel column have these plates. These are the plates that Mr. Bond is going to manufacture.

Another drawing I am enclosing with this newsletter is that of the single hole passenger seat bracket. Jerry Bengel did a nice job with the drawing and I appreciate him sending it in. If any of you have any other seat brackets other than the single hole, three hole or sliding mechanism, please let me know. JB Moates has a different type on his car and as soon as I have a chance to get him to remove it, I will have a drawing made. Evidently, the bracket used on the passenger seat, used in conjunction with the drivers sliding seat, is different than the single hole shown in the enclosed drawing. Please let me know if you have anything different.

• [REDACTED] • [REDACTED] •

I am enclosing a list of items that I proposed to the Judging Standards. I would ask those of you that are so inclined, to let me know what else you would propose that we send to be included in the next Judging Standards revision which will be in 2 years. I had to hurry and I hope the proposals I sent in make it in time.

At the national banquet in Fresno, this past December, I donated about 20 door prizes in the name of the Victoria Association. I have received a letter of thanks and wanted to inform you of this item. The donations didn't cost anything. I received them from my previous employer, The Southland Corp., the owners of Chief Auto Parts. I hope this created a little publicity for the Association.

REVISIONS TO THE JUDGING STANDARDS FOR THE MODEL A FORD VICTORIA BODY STYLE, 190-A.

ENGINE COMPARTMENT: No changes.

ELECTRICAL SYSTEM: No changes.

COOLING SYSTEM: No changes.

UNDERCARRIAGE: No changes.

EXHAUST SYSTEM: No changes.

INSTRUMENTS: No changes.

BRAKE SYSTEM: No changes.

STEERING COLUMN: No changes.

TOP: VISOR, no exterior visor on the Victoria. (See interior trim). The STEELBACK Victoria had a special molding between the cloth top and the steel of the top. This molding was made of steel and had a rubber insert. The molding was nailed to the top inside rail through slots in the steel car top edges. The parts book lists this as (Roof Finish Moulding) part # A 192312 RH and Part # A 192313 LH.

rawing at end of this list.

GLASS AND SIDE CURTAINS: No changes.

CARPETS AND MATS: On the front carpet, in addition to the four snaps on the firewall, there were four snaps under the front seats, screwed to the floor. The rear carpet had post snaps peened to the floor pan. The rear carpet was snapped to these. (This should be pointed out to the judges as it has been known that judges thought these were pop rivets and deducted points).

INTERIOR TRIM: The Victoria had an inside VISOR. This visor was mounted in front of the driver and passenger. It was mounted with a nickel plated bracket by three screws that went up into the first bow of the top. There were many part numbers for this visor as there were several interior cloth materials. As an example, brown mohair was part # A 192405-F. The F was the brown mohair designator. In other words, the different cloth used changed the part number last letter designator.

The visor panel was riveted to the bracket with the rivet head on the panel going up through the panel and through the holes in the bracket. The rivets were tube rivets and were joined with a tool similar to the brake rivet tool.

(Continued on next page).

(Revisions continued).

4

There is a rubber weather seal on the doors of the Victoria. Parts book lists this as: Door bottom weather strip (rubber) part number A 191490-B RH and part number A 191491-B LH.

SHEET METAL: No changes.

PAINT AND STRIPING: No changes.

INTERIOR PLATING: No changes.

EXTERIOR PLATING: No changes.

ACCESSORIES: The Victoria had special wind wing brackets. Upon request, photos can be submitted.

TOOLS: No changes.

LIGHTS: No changes.

HORN: No changes.

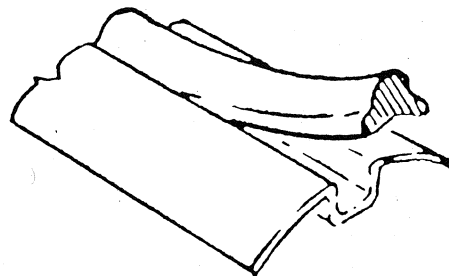
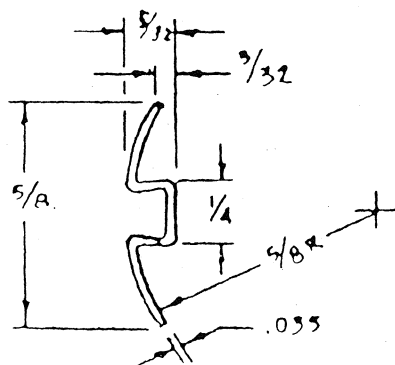
WINDSHIELD WIPER: Wiper parked to the left. (Viewed from inside looking out the windshield). Wiper mounted with the curved part up and flat side down and the vacuum line to the right. Color was black enamel. It was held on to the car by one nut on the outside screwed to the long shaft. A flat washer was used between the nut and the front panel.

START AND IDLE: No changes.

WHEELS, TIRES, AND VALVE STEMS: The Victoria rear wheel carrier was special to the Victoria only. It was shorter and mounted at an angle that matched (somewhat) the angle of the curve of the lower body. (Sometimes referred to as the BUSTLE).

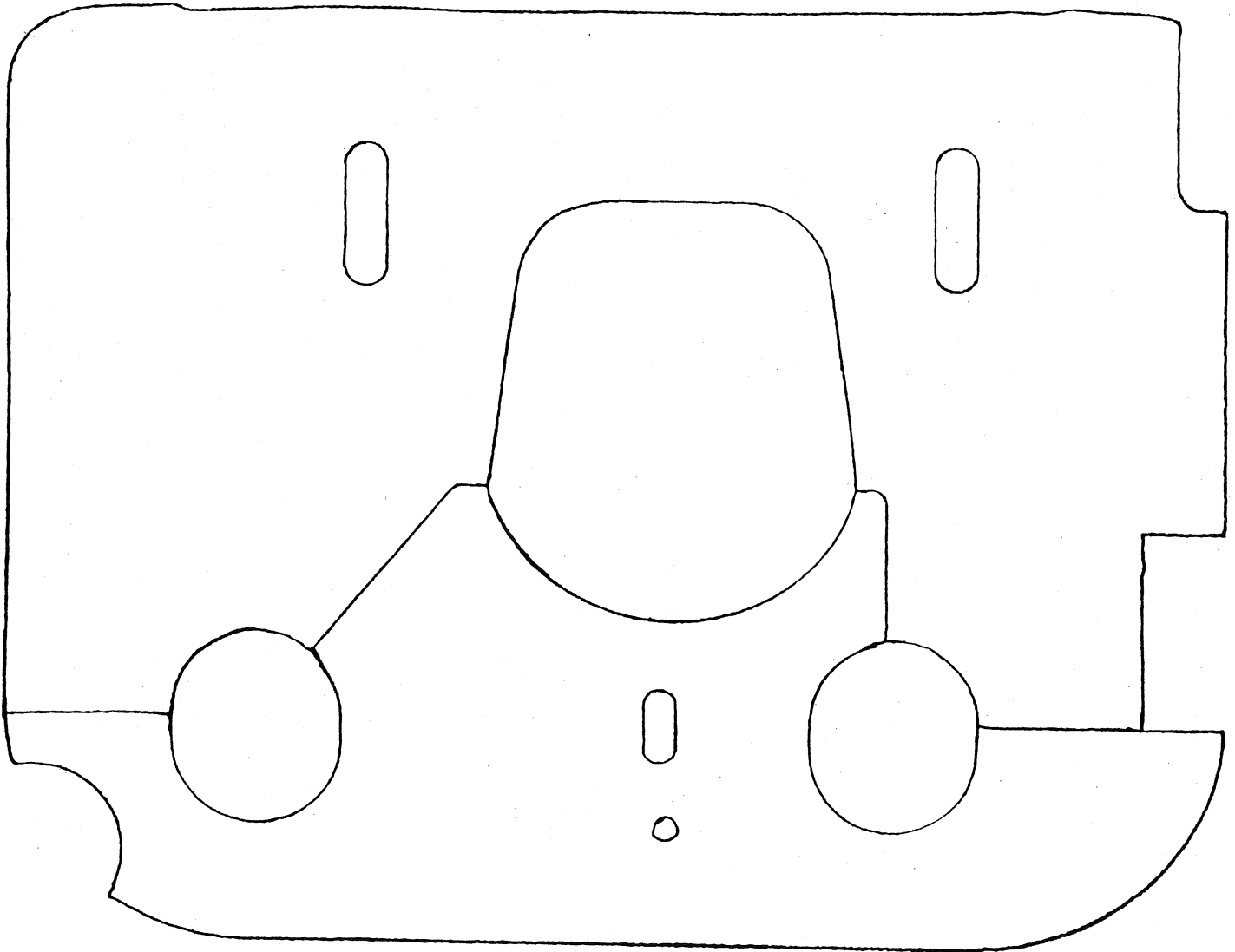
This is listed in the parts book as part number A 192062.

SHOCKS AND SHACKLES: No changes.



DRAWN BY HOWARD BARNES

Retainer (Roof F Moulding) Side - metal back 190A



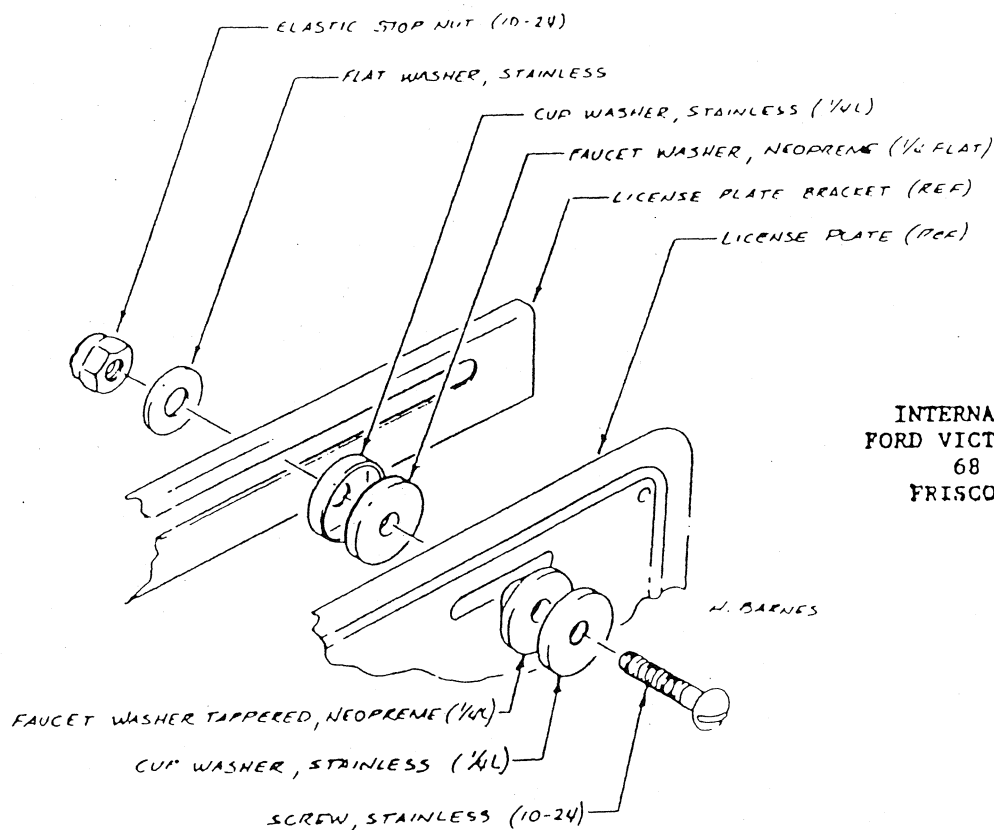
Model A Ford "Victoria" steering wheel floor board cover plates.

Note: Both the upper and lower plates are different on the Victoria than other model A's. There are a few other model A's with lowered steering wheel column and they too should have this style cover plate.

VICTORIA ASSOCIATION NEWSLETTER

The International Model A Ford Victoria Association newsletter is a Body Style Chapter of the Model A Ford Club of America and a Region of the Model A Restorers Club. The purpose of this organization is to aid its members in the authentic restoration of this (Victoria) particular body style. To achieve this purpose the newsletter is published by the Editor on a completely volunteer basis. It is written, edited, typed, printed and mailed from 68 Windjammer, Frisco, Tx. 75034. It is our intent to furnish you with as accurate information as possible. Reprint or quotes from this newsletter is granted, provided due credit is given.

How to mount your antique license plates without damaging them. This drawing is for the rear license plate. The front plate is mounted on the front license brackets in the same manner except you have to drill out the washers and cups to $\frac{1}{4}$ hole to use the existing bolts.



INTERNATIONAL MODEL A
FORD VICTORIA ASSOCIATION
68 WINDJAMMER
FRISCO, TEXAS 75034

Have you ever tried to tap a hole and didn't know what size drill to use. The chart below, will stop you from that guess work. I have included the hole size in case you just want the proper size for the bolt to go through.

TAP SIZES

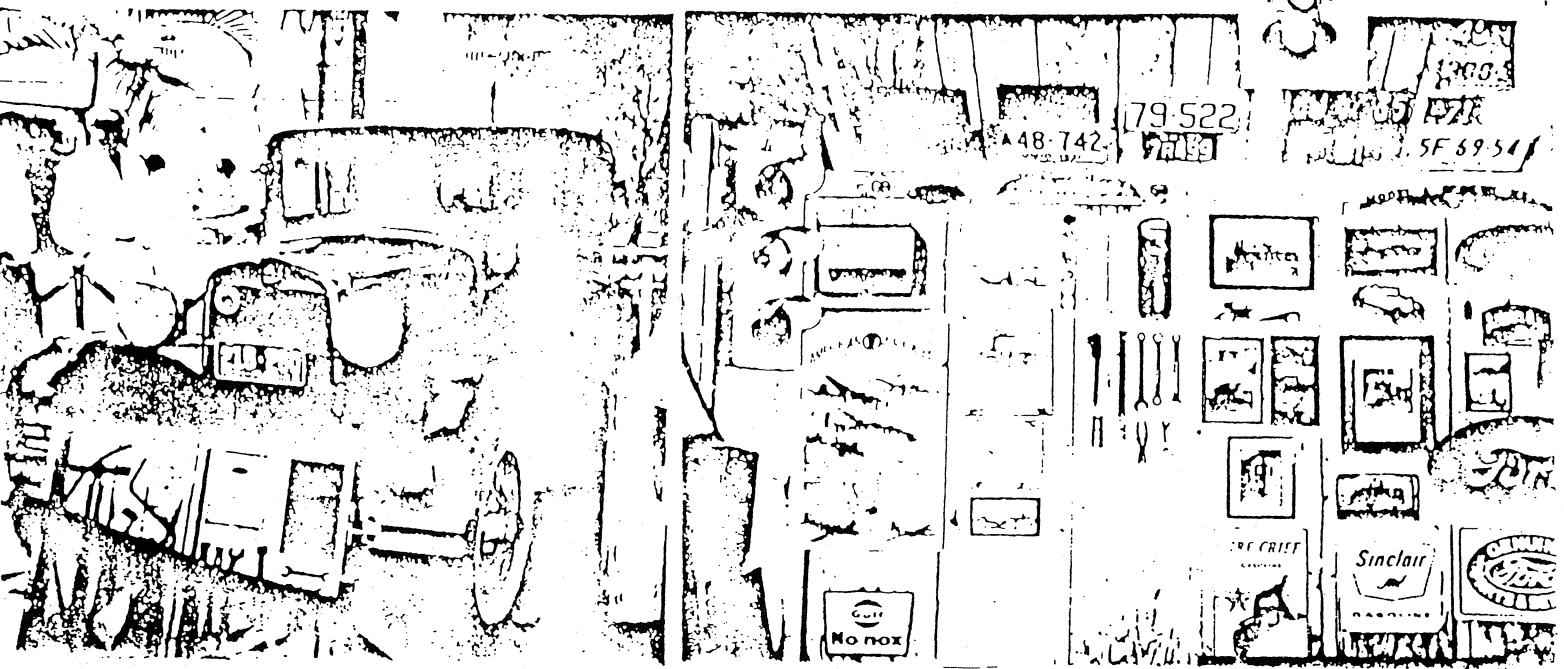
2/56 3/48 4/36 4/40 5/40 6/32 6/40 8/32 10/24 10/32

TAP DRILL

50 47 44 43 38 36 33 29 25 21

BODY DRILL

44 33 33 30 28 19 11 11



Left, Sandy Pedersen and June's car. Note the tool collection and Florida license plate. The interior of his carriage house is at right. The exterior was shown in a previous newsletter. Very nice.

This is a list of the drawings available to the membership from the Victoria Association. Price, 50¢ each including postage.

Victoria rear seat catch mechanism both male and female.

Victoria front seat rear footing plate.

Victoria front and rear carpet.

Victoria visor bracket.

Victoria floor board steering wheel plates, upper & lower.

Victoria roof finish moulding - retainer, side, for metal back Victoria. (There is a right and left).

Victoria windshield pattern.

Victoria door glass pattern.

Victoria, early seat wood bottom pattern.

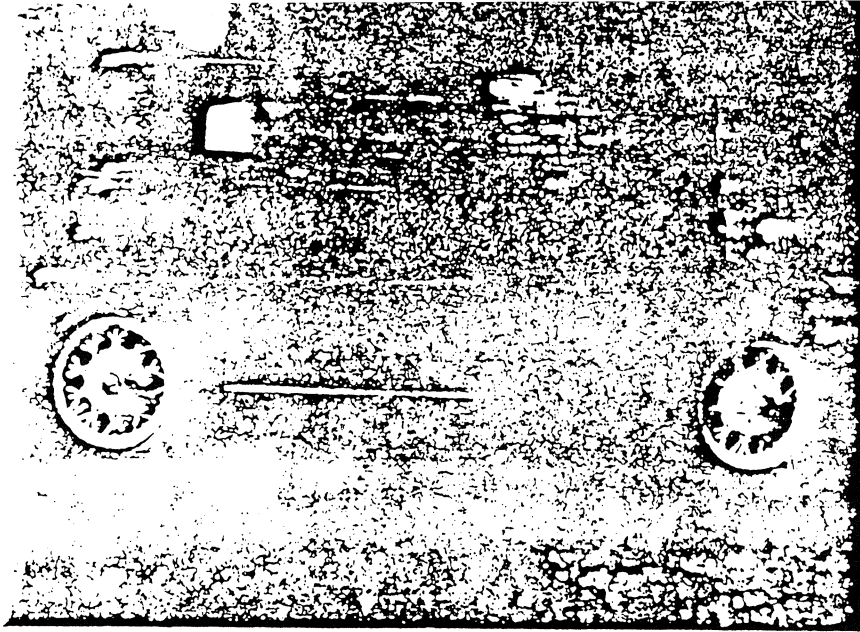
• • Victoria rear wood seat and seat back pattern. (Write for quote).

Victoria single hole mounting bracket for front seat.

Model A water pump, including new type bearings.

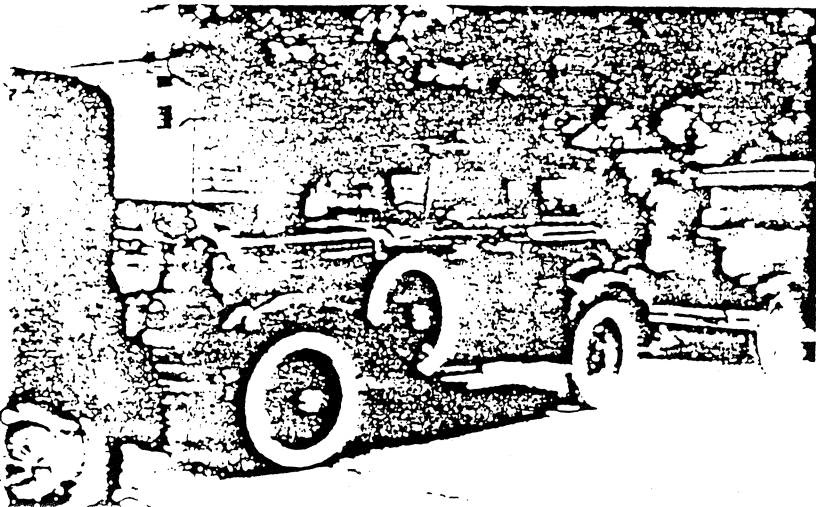
Model A Zenith carburetor exploded view and illustrated parts breakdown.

How to mount antique license plates without damaging them.



Clain & Ida Morrison of Wray, CO. own this Victoria. I notice that the top and interior are not in. This work is being done now. Looks like a fine Victoria

Wayne and Bessie Garrison of Lincoln, NE. own this Victoria. It was best of show at the Czech Festival in August, 1987. Very beautiful car.



Robert Hitchcock of San Antonio owns this Victoria. It's too bad you can't see the color as these photos should be seen to be appreciated



In the last newsletter, I mentioned the two gentlemen from Australia that are in a Rallye from London to Sydney. Well, Mr. Bevan Sharp and Mr. Geoff McEwan have passed through Dallas already. They started in London, went to the mediterranean, shipped the car to Baltimore, drove to New Orleans, San Antonio and Dallas. At my home, they did routine maintenance and also changed the radiator. I balanced their fan blade (it was way out of balance). Since it was snowing outside, they appreciated my heated garage. They are on their way to El Paso, Phoenix, Las Vegas and Long Beach. They will ship the car to Sydney and drive completely around Australia and finish up in Sydney at which time they will get a trophy and then they will have to drive home to Perth. Total trip 17,000 miles in a 1929 model A Tudor. The Dallas Model A Ford club had a dinner in their honor. The Ft. Worth Cow Town A's also had them for lunch and a tour of downtown Ft. Worth. They will always remember the Texas hospitality. Bevan is writing a book on the experience and should have it out by the end of the year. I will always remember the two super fellows from Australia.

A new member, Mr. Steve Cannon, 1418 MC 150 W., Summerfield, MC. 27358, makes model A Victoria wood. I have added his name to the merchants list. He is also in the want ad section of this newsletter.

1987 ACCOUNTING

1987 accounting:

Collected from dues	1,250.00
Newsletter printing	632.22
Postage	270.46
Letterheads & Envelopes	94.47
Printing and mailing back issues and incidentals	<u>246.82</u>
Expenses T.O.T.A.L.	1243.97
Balance carried over to 1988	6.03

All of the expense items are documented with receipts and are available to the members for their inspection.

*Regards,
Charlie Kosica*

ADS

- 1) I have for sale, two good right hand doors for Victoria. Pages Model A Garage, Havenhill, NH. 03765 (603) 989-5562 & 989-5592.
- 2) WANTED - ORIGINAL Wood patterns for Leatherback rear window. Also, need original patterns on wood for top and body wood for Steelback Victoria. Can help you with your wood or will buy good original patterns. Steve Cannon, 1418 NC 150 W., Summerfield, NC. 27358-(919) 643-7373.
- 3) WOOD - I will do your wood if you send the patterns. Fred Steiber, 35 Canasawacta St., Norwich, NY. 13815 (607) 334-3089. He has the header available.
- 4) WANTED - Victoria windshield frame. N.J. Palmer, 1786 N. California St., Orange, Ca. 92667, (714) 538-5507.
- 5) WANTED - Drivers side front window regulator & channel for a 1931 Victoria Steelback. David M. Clark, 307 Lilac, Blackfoot, Id. 83221, (208) 785-0816.

FOR SALE - Victoria Visor brackets and parts for same.

These brackets are an exact duplicate of the original and the parts are interchangeable. Price is \$80.00 per set of two. Contact: William H. Bond, 1040 Old Squaw Pass, Evergreen, CO. 80439, ph. 303-670-3283.

28-31 COIL box, 28 early NOS rear roadster fender, 28-30 exhaust manifold, 28-31 engine heads, 28-31 fly-wheel housing, 28-31 heater, 28-30 electric wipers, 28-31 tire pumps, 28-9 rh coupe door, 28-9 rh front fender, 29 jack, 29-30 fuel shut off, 29-30 pop-out switch, 29-30 rear sedan apron, 29-31 open car exterior handles, 29-31 starter, 30 radiator shell, 30-31 headlamp bar, 30-31 Victoria windshield pillar trim, 30-31 windshield pivots, 31 4-dr sedan back seat spring, r & l w. armrest & wood frame, hardware, 31 C-I jack, 31 dash panel, plateable, 31 gas tank, clean, 31 intake manifold w/ port for vacuum, 31 late exhaust manifold, 31 late instrument dash, 31 NOS vacuum wiper, 31 round speedometer, 31 Victoria armrest, 31 Victoria tire carrier, rear mount, SASI Mike Dennis, 1845 S 48th, Lincoln, NE 68506, PH 402-489-6145

30/31 RUMBLE handle & latch, \$17; original 30/31 sidemount, \$45; round speedometer, \$43; coupe spare tire carrier, 30/31, \$28; 28/29 cast front fender braces, \$25; sedan rear, \$18; 28/29 or 30/31 front bumper braces, \$22; early 28 parts, fan shroud, \$110; water-pump, \$30; gas pedal mechanism, \$25; starter switch & pedal, \$35; rear backing plate, \$45; Victoria parts, wing dow moldings, right door, \$55; rear window frame, \$45 ea; rear garnish molding for r, \$40 ea; rear valance skirt, \$90; dome light and switch, \$40; rear tire carrier, \$25; complete top assembly for 68 B cabriolet, includes all hardware, good wood, landau trim, rear window and glass, pads, top material, \$750; 36 parts, excellent grille trim, sides and center, \$80; speedometer gear and cable, \$20; 33/34 script crank and handle, \$30; non script, \$18; Bill Ravenscroft, 7300 Mackey, Overland Park, KS 66204, PH: 913-236-4670.

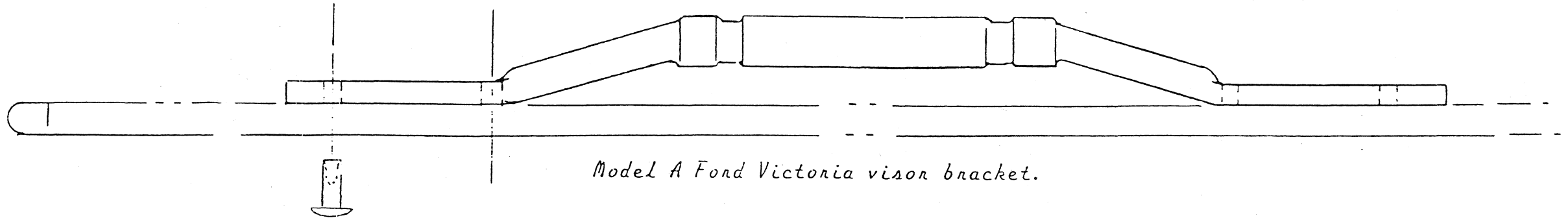
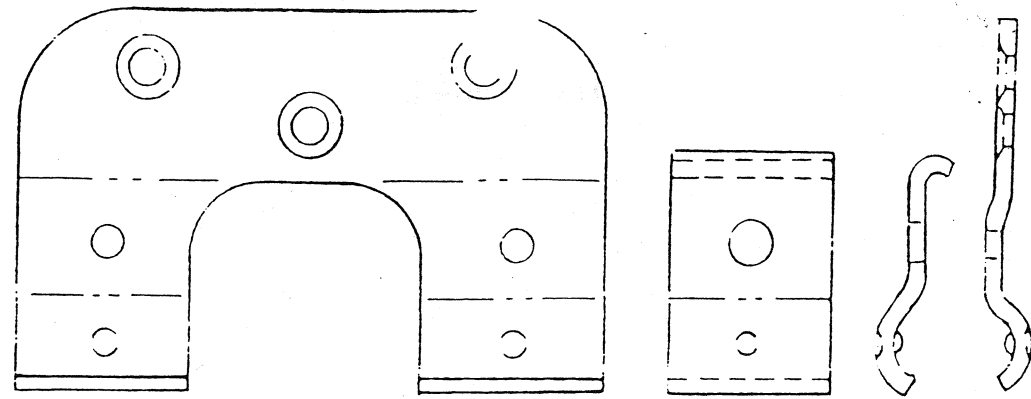
REPRESENTS making a show car? We have the quality pieces you want and the tools to install them right. Just a fun car? Do the basics right and don't regret it later: floor pan kits for Model A still, \$6; waffle tool with the authentic pattern that Ford used, for your 401 air gun, \$15. Include \$1.50 for shipping under \$10; 15% over SASI for our latest catalog with all our kits and tools. Big Flats Rivet Co, 649 Sunset Dell Cir, Horseheads, NY 14845

1930-31 2-DOOR phaeton top irons; 1928-29 roadster pickup top irons, 1928-31 decklids, latches, handles, rumble hinges, step plates, deck rain gutter, 1928-31 roadster doors, hinges, latches, dash rail, package trays, tach strips, windshield posts, 1926-31 window moldings, and frames, all models including Vicky and slant windshield, 1930-31 coupe roll down rear window frame, Kingston 5-ball carb, stem-wind dash clock, Model A steering column radio, 1930-31 panel delivery visor, latch side window frames, 1926-31 rear tire mounts all models, including Vicky, 30-31 Vicky dome light and windshield header, 1928 tail lights and brackets, hand Klaxon horns, 1920-27 coil boxes, 1920-31 headlights, tail lights, speedos, dash lights, dome lights, fender and bumper brackets, sidemounts, rear view mirrors, slors, horns, cowl lights, engine parts, running board brackets, dash faces and rails, radiator and sport coupe rear window frames, sedan top rain gutters, door hardware for all models, much more. 702-851-3651 after 6 pm, Reno, NV. (CFF Bu)

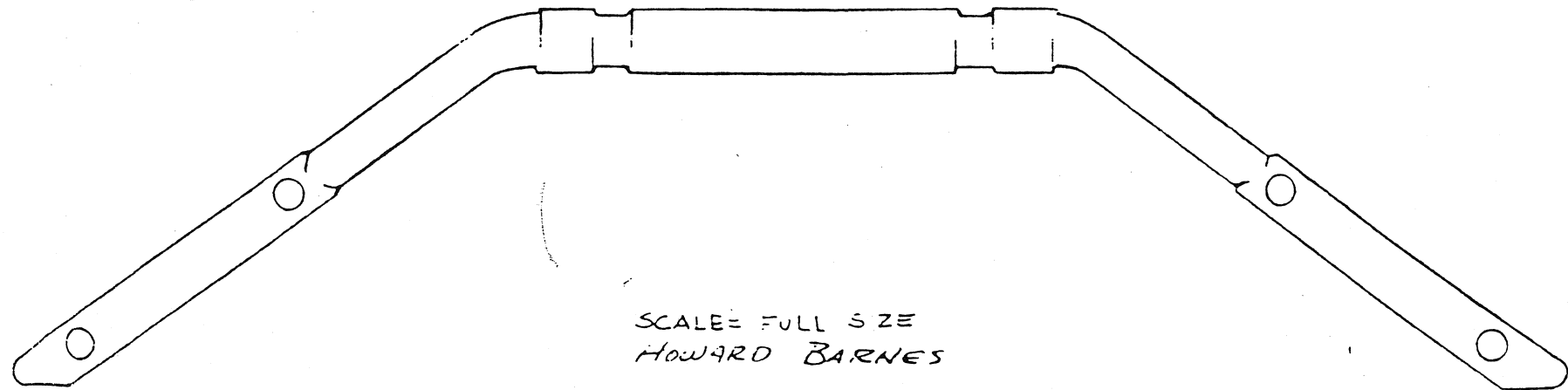
MODEL A Victoria rear mount spare tire carrier. Original Parts Company, 303-244-6981, CO.

OPEN car 1930-1 cowl w/gas tank, \$250, 1928-29 w/gas tank, \$250; straight windshield cabriolet cowl w/gas tank, \$250; late 1931 gas shut-off valve leads to install, \$45; Victoria rear bumper braces, \$145 pair; same coupe/roadster \$65 pair; closed car domes, inquire; hundreds of headlights, inquire; good original gas tanks, 1928-31, \$75 to \$125; rear window frames, coupe & sedan, \$25 each, add 10% s/h, except freight, which goes collect; parts kept open by appointment; many other hard to find parts, call or write. Walter Rodinson, Box 163, Pike, S110780, PH: 604-989-5557, Mon-Fri 8-5 best time to call.

INTERNATIONAL MODEL A
FORD VICTORIA ASSOCIATION
68 WINDJAMMER
FRISCO, TEXAS 75034



Model A Ford Victoria vison bracket.

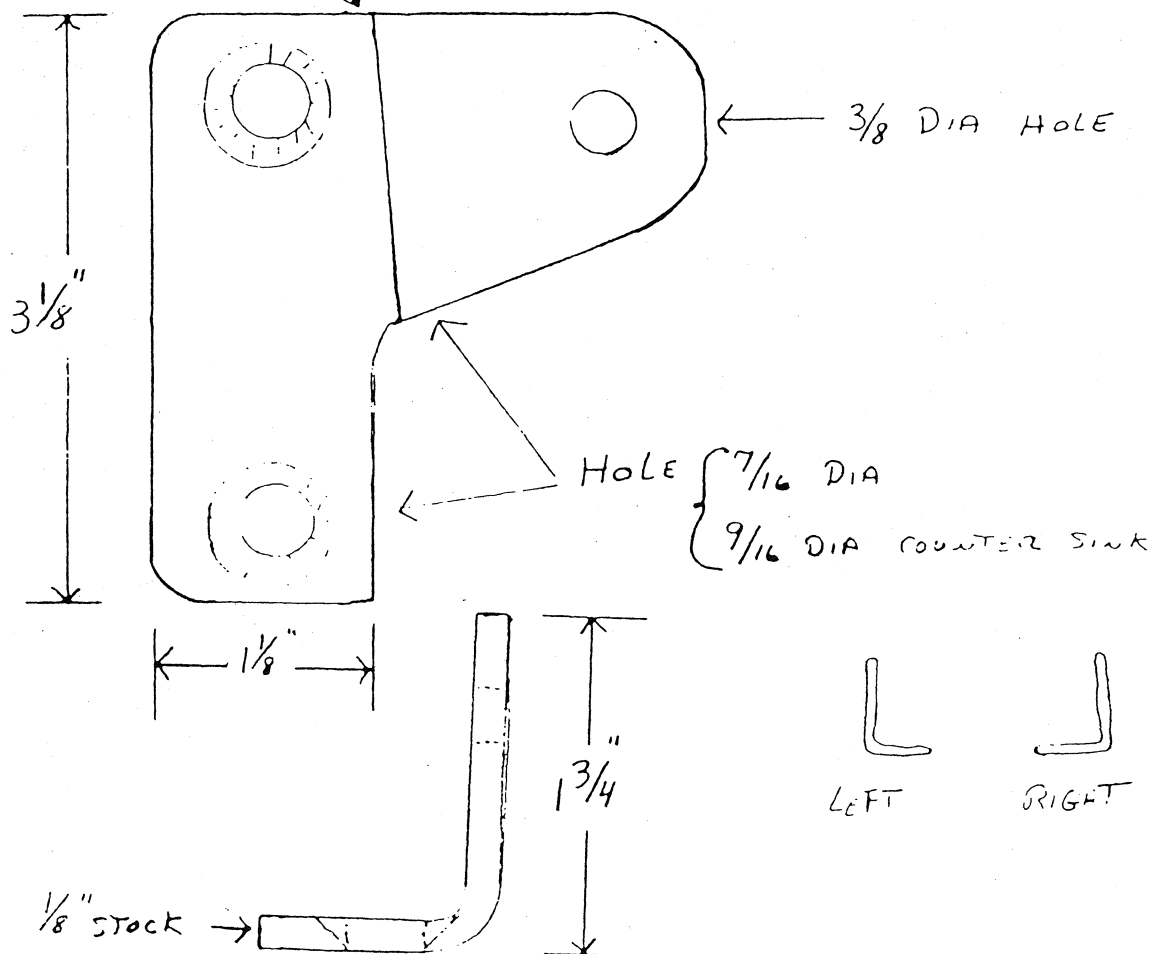


SCALE= FULL SIZE
HOWARD BARNES

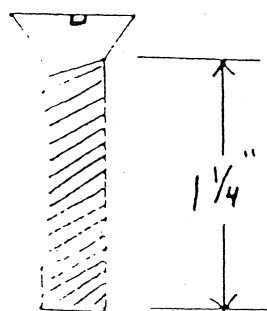
"PASSENGER SIDE SEAT BRACKET" VICTORIA

NOTE ANGLE
OF BEND

RIGHT SIDE
FRONT OF CAR



MOUNTING BOLT



5/16 DIA X 18

JERRY BEUGEL
12/87

INTERNATIONAL MODEL A
FORD VICTORIA ASSOCIATION
68 WINDJAMMER
FRISCO, TEXAS 75034