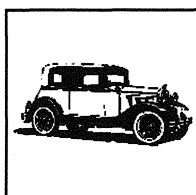


International Model A Ford Victoria Association

Model A Ford Club of America - Model A Restorers Club
Founded 1986 - Frisco, Texas

January, 1996
Volume 11, Issue 1

Editor: Tom Endy
Publishers: Bob & Karyn Sitter



THE AROUND THE WORLD VICTORIA!

To keep your rear end from falling out, Doc Ingwersen says "Brush your teeth after every meal and make sure there is oil in your overdrive."

MARC\MAFCA Tacoma National, July, 1994.

FORM 419
DATE 2-23-31

Ford Motor Company

CUSTOMER'S
REQ. NO.
CONT.

BUFFALO, N. Y.

INVOICE NO.

I 7493

9/15/31 W

INVOICE DATE

VENDOR'S NOS.

SOLD
TO

HAYES & ANDREWS
LIMA NY

SHIPPED TO
AND
DESTINATION

DATE SHIPPED

CAR INITIAL & NO.
HOW SHIPPED
AND ROUTE

TERMS

FROM

F. O. B.

PPD. OR COL.

FOR CUSTOMER'S USE ONLY

REGISTER NO.

VOUCHER NO.

F. O. B. CHECKED

TERMS APPROVED

PRICE APPROVED

CALCULATIONS CHECKED

TRANSPORTATION

FREIGHT BILL NO.

AMOUNT

MATERIAL RECEIVED

DATE

SIGNATURE

TITLE

SATISFACTORY AND APPROVED

ADJUSTMENTS

ACCOUNTING DISTRIBUTION

AUDITED

FINAL APPROVAL

QUANTITY		MATERIAL DESCRIPTION	UNIT PRICE	AMOUNT
ORDERED	SHIPPED			
	1	VICTORIA BLK MOH BG&O FRT&DEL TIRE COVER	452.40 14.25 486.00 .90	35.70
			503.25 503.25	

O.K.
C.C. Egan
Purchase Journal

An original invoice for the purchase of a Model A Ford Victoria!

Dale Higgs of Forrestville, NY



Charlie Says!

by Charlie Viosca

Dues For 1996!

It's that time of year again! There is good news though. Tom Endy, our new editor has agreed to do three newsletters this year. As you know, the membership dues are based on the number of newsletters we produce each year. The dues for 1996 will be \$10. Please send your check, made out to the "Victoria Association", to Charlie Viosca, 11084 Windjammer Drive, Frisco, Texas 75034. Do not send your check to the club treasurer, John Icenhower or the club editor, Tom Endy.

Do it Now!

Several members have already paid their 1996 dues based on last year's \$6. fee. Thank you for your promptness, but we need another \$4. from each. **Bob Bullion, Anders Ramberg, Everett Hessels, Bruce Midlane, Ralph Deemer and Bill Bond.**

Thank You!

I wish to thank Kay Lee for all the help she has provided over the past several years. Kay did the roster, the mailing labels and the index of the past newsletters. I do hope that Kay will keep the index up to date. A big thank you to Bob Bionde for the articles he has contributed to the past newsletters. Bob submitted the recent article on Victoria Body Features. Thanks again to Tom Endy for taking on the job of newsletter editor. Without membership support such as this the Victoria Association would have ended long ago.

\$Five Bucks More!

In the October newsletter I asked the members who purchased window shades to send me an additional \$5. as the original cost estimate of \$110. was \$5. too low. I also put a note in each shade order when I shipped them. If you paid \$115. you have paid the full amount and do not owe anything. If you ordered only the rear shade, you owe \$1.75 more. Only one member has responded so far. I would appreciate it if those members still owing a balance would put a check in the mail to me. Please check your order so I don't have mail letters out.

Shades Are Still Available!

There are two complete sets still available (three shades per set). The price is \$115. which includes shipping. If you are restoring a Victoria, bear in mind that these are the last two sets available. There probably won't be any more, ever again. Buy them now and put them away until your Victoria is ready for them. There are also two sets (three shades per set) and three single rear shades that are "seconds". The prices are \$97. for the full sets and \$40. for the single rear shades.

Seat Cover Material!

Most of us are accustomed to seeing the Victoria with Brown Mohair covering on the seats. However the Victoria also came with two other types of covering. There was Bedford Cord and Tan Broadcloth. You may want to consider this when you select the seat covering for your Victoria restoration.

Rear Seat Catch (Female)!

Steve Becker of Bert's Model A Ford Center has advised me that he has several of these hard to find seat catches. Check with Steve if you are looking for Victoria parts. He gets them in occasionally.

Bert's Model A Ford Center

3560 Chestnut Place

Denver, CO 80216

303-293-3673

Ordering 800-321-1931

Number Tag!

Dale Higgs of Forrestville, NY has a Victoria with the original sales slip. On the left side of the driver's door there is a brass plate attached (over the upholstery) with the number 947. Can any member shed any light on what the tag means? Dale believes this Victoria has never been restored.

Judging Standards!

John Icenhower, our club treasurer, has proposed that the Victoria Association submit a proposal for a section covering the Victoria to the MARC\MAFCA Judging Standards. We need to form a committee to proceed. Are there any volunteers? ☺



Sid Saw Em!

by Sid Gough

Victoria Advertisements!

The following advertisements for the Model A Ford Victoria appeared in a number of Model A club newsletters from around the country last Fall. There is no guarantee that they are still valid, but they may still be. ☺

FOR SALE:

1931 Victoria, older restoration. \$12,000. (CDN)
George Tobin, Scarborough, ON 416-438-1070
(from Quill & Quail)

FOR SALE:

1931 Victoria, chassis completed, body under restoration. Will complete or sell as is. Make offer. Bob Newgard, Tacoma, WA 206-535-2142
(from Gertie's Gossip)

FOR SALE:

1931 Victoria Leatherback, Copra\Copra Drab, LeBaron Bonney interior, Many accessories. 12 volt electrical system. Less than 700 miles since restoration. \$15,000. Carol Beckelman
360-834-7573 (from The Ahoooga News)

WANTED:

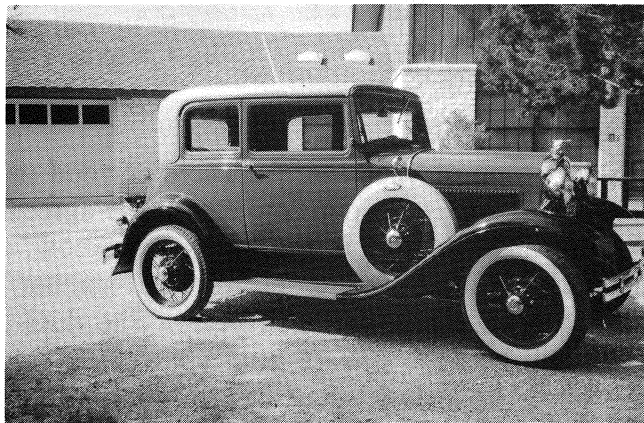
Rear of body for Victoria. John Jones Bellevue, WA
206-746-6476 (from Evergreen Echoes)

WANTED:

1930-31 right rear fender for a Victoria or sedan
Keith Greer 509-747-4787 or
Bill Harms 509-922-7231
(from A Tailpipe, Spokane, WA)

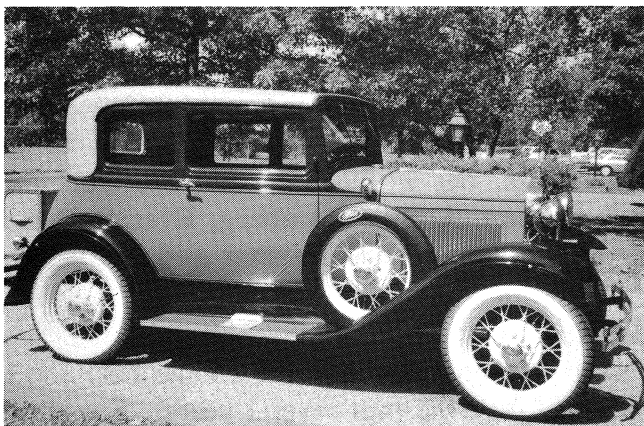
WANTED:

Right rear window frame and garnish molding for
1931 Victoria. Bill Greer 509-747-4787
(from A Tailpipe, Spokane, WA)



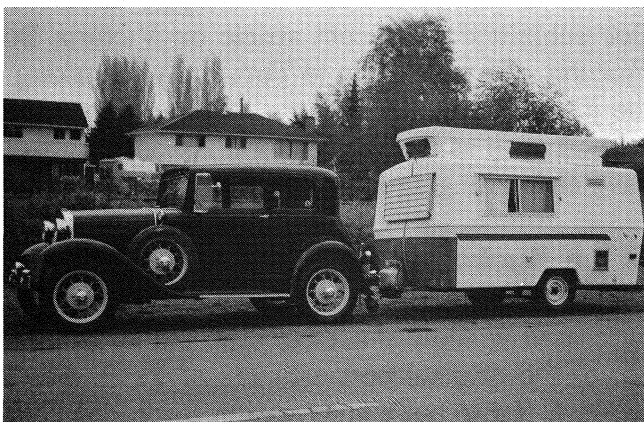
Victoria Leatherback!

Owned by Bill Peace



Victoria Leatherback

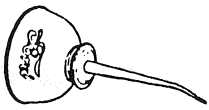
Owned by D. C. Swacina



Victoria Steelback

Owned by Bruce Midlane

The trailer is a "Compact Jr." with a pop-up roof, made in California in 1974.



Properly Oiled!

by Ben Hadd

Overdriving The Victoria!

There is a lot of controversy in the Model A hobby about the feasibility of installing an overdrive in a Model A Ford Victoria. The Victoria has a dropped floor pan in the rear of the car with a tunnel in the center of it to allow clearance for the torque tube. This is the factor that creates all of the controversy. The question is, is there sufficient clearance to allow the overdrive housing to clear the body pan? Many people believe that only a Ryan or Mitchell overdrive will clear since both are located back against the banjo. The Borge Warner and Volvo conversions are located half way between the banjo and the transmission and will not clear, according to many experts. I spoke with the Ryan and Mitchell people to determine if their overdrives would fit in a Victoria and I didn't come away with a definitive answer or a whole lot of confidence.

When I acquired my Victoria it was with the full intention of installing an overdrive in it. I had installed Borge Warner overdrives built by Bert Hiller in my previous two Model A's and I was very pleased with both installations. The final decision was to install a Ryan overdrive. This was based on a close study I made of a friend's Ryan installation along with a few measurements. It looked to me like it would fit.

After the Ryan overdrive was installed there was only a few inches of clearance between the top surface of the overdrive housing and the lowest portion of the dropped pan. It was not practical to drive the car in this condition because at every dip in the road the dropped pan would bottom out on the overdrive housing. As an attempt to resolve the problem I replaced the standard Victoria eight leaf rear spring with a ten leaf spring that is standard on a Tudor and a Fordor. This added several more inches of clearance but it was not enough. The dropped pan would still bottom out on a good size dip and especially if there were passengers in the back seat. After a few thousand miles I noticed some severe witness marks on the dropped pan. The very forward outer edges of the overdrive housing were contacting the dropped pan at the end of the tunnel and just at the edges of the tunnel. If

the tunnel was a couple of inches wider at the back end the overdrive housing would clear. The final resolve was to remove the dropped pan from the car and have the tunnel widened. The pan comes out fairly easy. The seats and the carpets must come out first, then it is a matter of removing a number of screws and small nails. The pan can be lifted out and it is easily transported in the trunk of a modern iron. I took the pan to an auto body & fender shop where they reworked the back end of the tunnel with a hammer and dolly. The end of the tunnel was flared to angle and widen several inches from the back. The body & fender folks did a nice job on it. The rework looks like it came from the factory with the end of the tunnel flared. The pan was repainted and installed back in the car and there is now plenty of clearance to accommodate the overdrive housing.

Two people that I know of who have installed a Borge Warner overdrive in a Victoria are Doc Ingwersen and Mel Gross. Both claim that they added one extra leaf to the standard Victoria eight leaf spring and it provided enough clearance. The Borge Warner overdrive is half way up the tunnel toward the transmission. The angle of deflection of the body would be less than it is back by the banjo, so it is possible that with the extra leaf the overdrive will clear the dropped pan.

My Victoria has been driven almost 3,000 miles since the Ryan overdrive was installed. The last 1,000 has been since the dropped pan was reworked. I am very pleased with the Ryan. I like the performance and the installation looks good now. The advantage of the Ryan over the Borge Warner is the fact that there is no free wheeling associated with the Ryan. This factor is very significant when driving in the mountains. You can use second and first gear overdrive when coming down a steep hill which takes advantage of the engine compression to provide braking.

If you are considering installing an overdrive in your Victoria, it can be done, but it is not a straight forward project like it is with the other Model A body styles. You will no doubt have to rework the rear spring, the dropped floor pan, or both. ☺

**Source Reference: The *Distributor*,
Orange County Model A Ford Club**



Dropped Floor Pan!

by Don Gajewski

Reproductions Available!

I am making fiberglass rear pans for the Victoria, A-400 and Deluxe Phaeton. I know there are a number of Model A's out there who could use this pan. I am selling them for \$400. each. These are really first class pans. The mold was made from an original pan, so the reproductions are exactly like an original. Interested parties can contact me. ☺

Don Gajewski
2017 Inverness Dr.
Carrollton, Texas 75007
214-242-4093

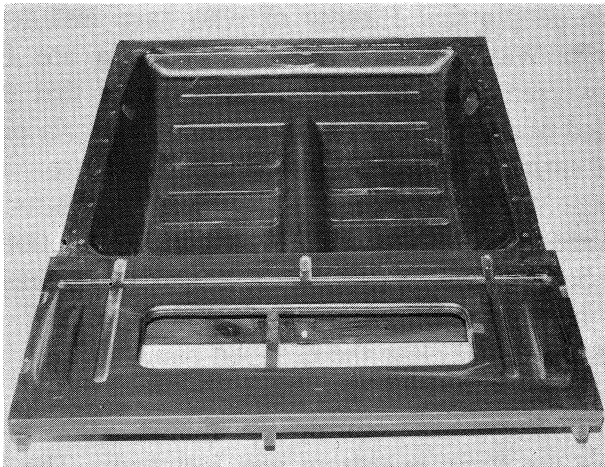


Photo of The Mold!
(The actual pan will look as if new!)



Great News!

MAFCA Newsletter Award!

Charlie Viosca has been awarded the MAFCA Special Interest Group Newsletter Award for the Model A Victoria Association. The plaque was presented at the Winter National Meet in Concord, California last December. ☺

MODEL A NEWSLETTER AWARD

1995

MAFCA SPECIAL INTEREST
GROUP NEWSLETTER

VICTORIA ASSOCIATION
FRISCO, TEXAS

CHARLIE VIOSCA
DIRECTOR

From the plaque!



Wider Margins!

by Tom Endy

Half Inch!

Several members have commented that they would like to see wider left-right margins incorporated in the newsletter because they save the publication in a three ring binder. My apologies to all you folks who lost the first letter of several words in the last newsletter. The newsletter will from now on have half inch margins at both sides of the page. The half inch margin will accommodate a standard three ring hole punch. ☺

"Genuine" MODEL A & A-A MUFFLERS
MADE IN Beaver U.S.A. STAINLESS CLAMP & BOLT of "Stainless Steel" *Totally*

FREE BONUS
Arrows show exhaust-flow through & around original style porting-baffling tube, which has 220 ports of 1/4" Dia. Other mufflers are cheap imitations of our "Genuine Beaver", ours is "Show Quality" & Guaranteed to fit & perform, correctly, (Forever!) Manufactured only by Wm. Beaver Sr., (M.A.R.C. since 1958.) \$299.00+\$15.00 U.P.S. to >

P.O. 138 • MARTHASVILLE, MO 63357 • PHONE-FAX ORDERS - 314-398-4427



Merchant's List!

Revised 2-21-95

For the Model A Ford!

The following merchants have done business with Victoria Association members and are considered reputable. They have good quality products and do business ethically. The Victoria Association and it's members, however, do not assume responsibility in connection with the endorsement of this list. Members must conduct business with the merchant on an individual basis. We invite the membership to recommend additional merchants to add to this list. ☺

**** Denotes Victoria Association membership.**

****William H. Bond**
1040 Old Squaw Pass
Evergreen, CO 80439
303-670-3283

Victoria visor brackets, floor board steering column covers, female dove tails and other Victoria items.

****Harry's Early Ford Parts**
8175 West Evans Creek Rd.
Rogue River, OR 97537
503-582-0526

For ordering, 800-833-2580
Send for catalog.

****Steve Cannon**
Classic Wood Mfg.
1006 N. Raleigh St.
Greensboro, NC 27405
919-691-1344

Model A wood for the Victoria.
Well recommended.

****Del Swanson**
2009 McDaniel Ave.
San Jose, CA 95128
408-246-1915
Model A parts and restoration.

****Ron McIntosh**
936 Main St.
Morro Bay, CA 93442
Victoria body plates.

LeBaron Bonney Co.
6 Chestnut St.
Amesbury, MA 01913
617-388-3811

For ordering, 800-221-5408
Specializing in Model A Ford interiors and kits and other Model A Ford items. Catalog available.

Roy Nacewicz Enterprises
9384 Hubert
Allen Park, MI 48101

Model A items, specializing in the correct bolts, nuts, rivets, etc. All correct thickness, plating, etc. Send for catalog.

Quail's Roost
P.O. Box 23227

Albuquerque, NM 87192
Quality Model A steering aids and specialty items.

A & L Parts Specialties
Canton, CT. 06019

Quality Model A parts & specialty items. Has a nice reproduction of the wind wing bracket.

D. J. Vagasky
Rt. 4, Box 390
Raeford, NC 28376
919-875-7571

Victoria garnish molding.

Bratton's Antique Ford Parts
9410 Watkins Rd.
Gaithersburg, MD 20879
301-253-1929

For ordering, 800-255-1929
Quality Model A parts, very complete parts stock.

Snyder's Antique Auto Parts, Inc.
12925 Woodworth Rd.
New Springfield, OH 44443-9753
216-549-5313
Send for catalog. Has Victoria seat springs.

Glasco
85 James St.
East Hartford, CT 06108
203-289-2058
Replacement auto glass.

The Plasmeter Corporation
173 Queen Ave. S.E.
Albany, OR 97321
503-928-3233
Model A cast iron brake drums.

Wallace W. Wade
4303-C Irving Blvd.
P.O. Box 47901
Dallas, TX 75247
214-688-0091
All brands and sizes of Model A tires.

Vintage Auto
Harry Cooke
2 Howard St.
Simsbury, CT 06070
Trunk plans and hardware.

N/C Industries, Inc.
215 S. Thomas St.
Sayre, PA 18840
Steering sector bearings and
steering ball replacements.

Master Plating
2109 Newton Ave.
San Diego, CA 92113
619-232-3092
Expert plating, chrome, cad, etc. Restoration done
on parts when needed and if requested.

Auto Hardware Supply
906 Broadway
Bedford, OH 44046
Bill Slavic
216-232-8132
Nice parts that are relatively hard to find.
Cage nuts, screws, plus general Model A items.

Big Flats Rivet Co.
639 Sunny Del Cir.
Horseheads, NY 14845
607-562-3501
All Model A rivets.

Warren Foster
RFD #482
Dodger's Hole Rd.
Edgartown, MA 02539
617-627-3291
Speedometers and pop-out switches.

Antique Auto parts
13 E. Garvey Ave.
Rosemead, CA 91770
818-288-3193
818-288-3131
Rear Model A window rubber.

Bob Drake Reproductions, Inc.
1819 N.W. Washington Blvd.
Grants Pass, OR 97526
503-474-0043
For ordering, 800-221-3673
Steering wheels and halogen light kits.

Terry Burtz
345 Budd Ave.
Campbell, CA 95008
406-378-8666 (after 6 P.M. Calif. time)
Style 1 molding for installing over roof header on
both Leatherback and Steelback Victoria's.



Classified Ad's!

FOR SALE:

Victoria Body Parts. The body has been burned, but I have all of the body parts for sale. I will be gone until early November. Sherwin Rhode, 528 Sandler Dr. N.E., Albuquerque, NM 87123. 505-299-0077.

WANTED:

Rear spare tire carrier for a Victoria. Roger Miller 4511 Waveland Ct., Des Moines, IA 50312. 515-279-1874.

WANTED (for a Victoria):

(1.) **Original rear skirt.** (2.) **Passenger seat** (for the latter model that uses the sliding drivers seat, reference page 229 of "Henry's Lady".) (3.) **Body Pieces** that go above the door that covers the wood. John Icenhower, 1613 Ryan Rd., Sulpher Springs, TX 75482. 903-885-6748.

WANTED:

The two windshield post moldings for the Victoria. If you have them, please contact Charlie Viosca. 214-625-2922. (Mal Bradley, Australia)

HELP OFFERED:

If you need help with the installation of your new **Victoria window shades**, I can do it for you. I can also make the tassels exactly like the original. Bill Bond, 1040 Old Squaw Pass, Evergreen, CO 80439. 303-670-3283.

WANTED (for a Victoria):


- * Floor pans!
- * Roof metal between window post and door jamb!
- * All garnish moldings (I have the rear window)!
- * Seat brackets, springs and frames!
- * Spare tire holder and inside bracing!
- * Door post metal!
- * Window mechanism!
- * Rear skirt (under spare tire)!
- * Rear fenders (any others that fit?)!

Anders Ramberg
8960 168th Ave. N.W.
Ramsey, MN 55303
616-441-9065

WANTED:

Good running restored Model A Ford Victoria.
Price range \$13,000 - \$15,000.

Kent Olson
2406 Evergreen
Pampa, Texas 79065
Bus. phone 806-669-2233



PHONE (910) 691-1344
 FAX (910) 273-3074

1006 N. RALEIGH ST. GREENSBORO, NC 27405

STEVE CANNON

T.A & V-8 FORD
T SERIES MG

CHEVROLET
MG-A

ANTIQUE AUTOMOTIVE WOOD PRODUCTS

S/W Dovetails

S/W Visor Brackets

Bond's Specialty Parts

Shocks



Distributor
Units


(303) 670-3283
Restorations

1040 Old Squaw Pass
Evergreen, CO 80439

WM H. Bond

BERT'S MODEL A FORD CENTER

Model A/AA Parts, Service and Restoration
Bought / Sold / Traded
Individual Parts Rebuilding



800-321-1931

3560 Chestnut Place • Denver, CO 80216
(2 blks west of 36th & Brighton Blvd)
(303) 293-FORD (3673)

STEVE

CLIFF

"IKE"

ALAN

"Satisfaction Guaranteed"

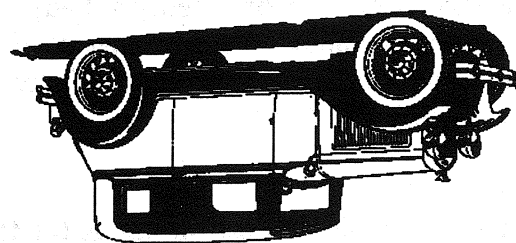
First Class Mail



11084 Windjammer
Frisco, Texas 75034



*International Model A Ford
Victoria Association*



The International Model A Ford Victoria Association is a body style chapter of the Model A Ford Club of America and a region of the Model A Restorers Club. The association was founded in 1986 at Frisco, Texas by Charlie Viosca. The purpose of the association is to aid the membership in the authentic restoration of the Model A Ford A-190 Victoria body style. To achieve the purpose this periodic newsletter is published for the association membership. The intent is to furnish accurate and complete information concerning the Model A Ford Victoria body style. Permission to reprint or quote from this publication is expressly given provided acknowledgement and credit is given to the author and to the publication.