



International
Model A Ford Victoria Association



Vol. 3 No. 2

VICTORIA NEWSLETTER

MP 88

1

This is the second newsletter of 1988. The first was in February and had an error in the number of the Volume. The printer erroneously put Vol. 1 when it should have been 3. Those of you that keep the newsletters, please make this correction.

In the Model A News for March/April 1988 on page 4, Mr. Kauffman made a note of the correction to Mr. Gilliatt's question of the rubber seal under the Victoria door. He mentioned help from me and the Victoria Association. A little free advertising never does any harm.

National

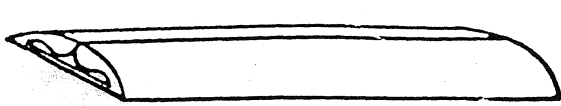
June 20-22 is "MEET ME IN ST. LOUIS", MARC's National meet. As in Virginia Beach, Mr. Roger Van Houten will conduct a Victoria meeting there. Those of you that plan on attending this event, please look for the Victoria meeting and attend.

July 12-15 "MODEL "A" THE NEW ENGLAND WAY", MAFCA's 15th National Meet & Convention, Sturbridge, Massachusetts. I will be there and will conduct a Victoria meeting for those attending this event. The meeting is scheduled for Friday 15th from 7 AM to 9AM in the Charlton room of the Sheraton Sturbridge. Also, I would appreciate those of you that plan on attending, to please let me know. That way, I can have an idea of how many to look for.

Research

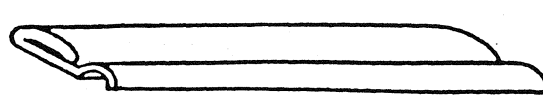
I am researching the bottom wood for the Victoria front seats. So far, it looks like there may be three different seat bottoms. I definitely know of the early plywood seat bottom and the late oak frame for the sliding seat mechanism. If any of you can shed light on anything else, please let me know. Someone sent a copy of a seat bottom that is the same as the early bottom but it was larger. I need to know if any of you might have the larger bottom or was that something someone made up. If you have access to your front seat wooden bottom, please make a copy of it and send it to me.

One final item that I am researching is the top moulding. I am enclosing four drawings of the Victoria mouldings and would like to hear from you especially those that have an original car or those that have a restored car and know that the mouldings are correct. Moulding number one should be on the front of the roof above the header and covers the edge of the cloth top where it meets the metal header. Number two is supposed to be after 2/31 yet I know of an ORIGINAL Victoria owner that has a car earlier than that date and he has this moulding. Moulding number three is the steel moulding that covers the cloth top at the edges of each side and the rear where the cloth meets the steel top. These three are for the Steelback Victoria. I do not have a Leatherback Victoria and need for you Leatherback owners to tell me what you have. Especially those of you that have ORIGINAL LEATHERBACK VICTORIAS. I am enclosing a fourth moulding, labeled "C", that may be the type used to secure all of the Leatherback tops. This is important information that we want to get into the judging standards so please take a little time and help me in this research.



Front
aluminum
5/8" wide

1

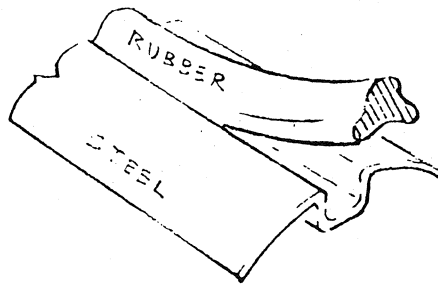
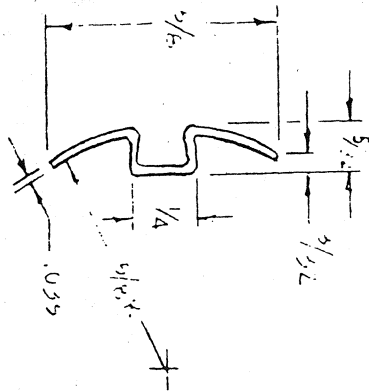


Front
aluminum
5/8" wide

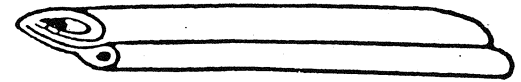
2

Side of aluminum
Front of car

2



3



C

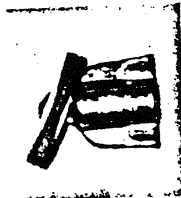
LEATHERBACK ?

Attention

I would like to inform the members that there is a special Wind Wing bracket for the Victoria and the A-400. I am enclosing a photo in the newsletter. It consisted of two pieces for each side. I have one for the Victoria and will add it after the National Meet in Sturbridge. I am showing my car without any accessories except white wall tires. I have a pattern of the wind wing glass if any of you would like to have it.



The two brackets on the left are the wind wing brackets for the Victoria and A-400. These two are for the top of the wing window. The left one is the underside and the right one is the top side. These brackets clamp to the door/window frame and the wing window glass is fit into the groove which allows it to be moved open or closed.



These two show the bottom and top of the lower bracket. The shiny part faces up on the lower bracket and the shiny part of the upper bracket faces down. There is a nut on the movable part to tighten the tension.

Roger Van Houten advised me that Meyer's Model A Wood is out of business. Mr. Myer has retired.

I mentioned previously in a newsletter that Bratton's Antique Ford Parts, has the Rope Assist Brackets. These are the correct vertical screw hole type as used on the Victoria. A member pointed out that a set is one bracket and two screws. If you need two, you will have to order two sets.

FOR SALE

FOR SALE:

1920 "T" Touring, has wire wheels, "A" crank, B RAGO, dual ignition, nuxtel, outside brakes. Stutz Bearcat dual distributor, wire wheels O S brakes plus other goodies. Price, 8,500 on \$5500 with a stock engine.

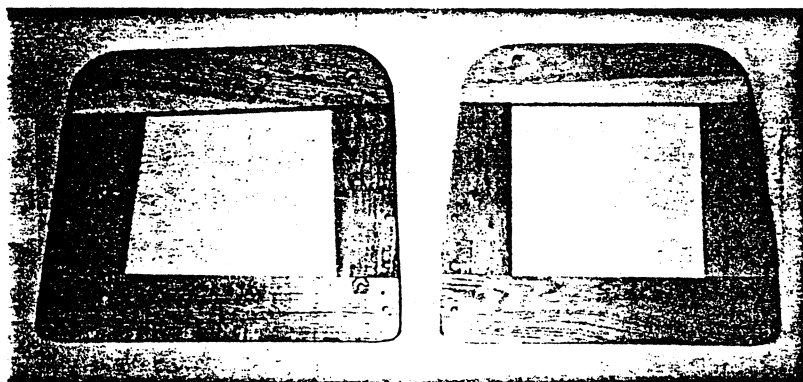
1926 "T" Roadster pick-up with muncie transmission, outside brakes, side curtains, distribution and four valve RAGO, 1 1/4 down draft "S" winfield, muncie transmission and O S brakes. Price \$6,000 on \$5,000 without the four valve & carb.

Contact: N.J. (Jud) Palmer, 1186 N. California St., Orange, CA. 92667, Phone - 714-538-5507.

FOR SALE: All for the Victoria - 1-floer pan \$250, 1 mint gas tank \$125, 1 pair of early 31 front seats with new springs includes brackets \$250, 1-rear seat bottom and back with new springs \$150, 1 pair of rear bumper braces, excellent condition \$150, 1 original headlight bar, excellent \$100, 1 original speedometer very good \$50, 1 pair of excellent running boards \$150, 1 pair of cowl lights with re-chromed arms \$100, Excellent reproduction front bumper \$75, excellent reproduction rear bumper \$75, reproduction radiator splash apron \$45, 1 complete LeBaron Bonney Bedford Cond Interior kit (2 yrs. old) rear spare tire carrier, dash rail, complete rolling chassis with matching numbers with mint frame. Contact: Ron Pollock, 1441 Pepperwood Dr., Niles, OH. 44446. Phone 216-652-7970.

FOR SALE: Leathenback Victoria, older restoration but in very good mechanical condition. Interior was by Sturm and in perfect condition. Price, \$7,000, contact: W.O. McCallum, 7026 Main St., Frisco, Tx. 75034 - phone, 214-377-2656.

FRONT SEAT



DRIVERS SEAT FRAME

PASSENGER SEAT FRAME

These Oak seat frames are for the late sliding drivers seat series of front seats for the Victoria. If you have the indented firewall, you probably should have this type. However, we have no exact date of when the sliding seat went into production. We only know that it was in the late Victorias.

WANTED

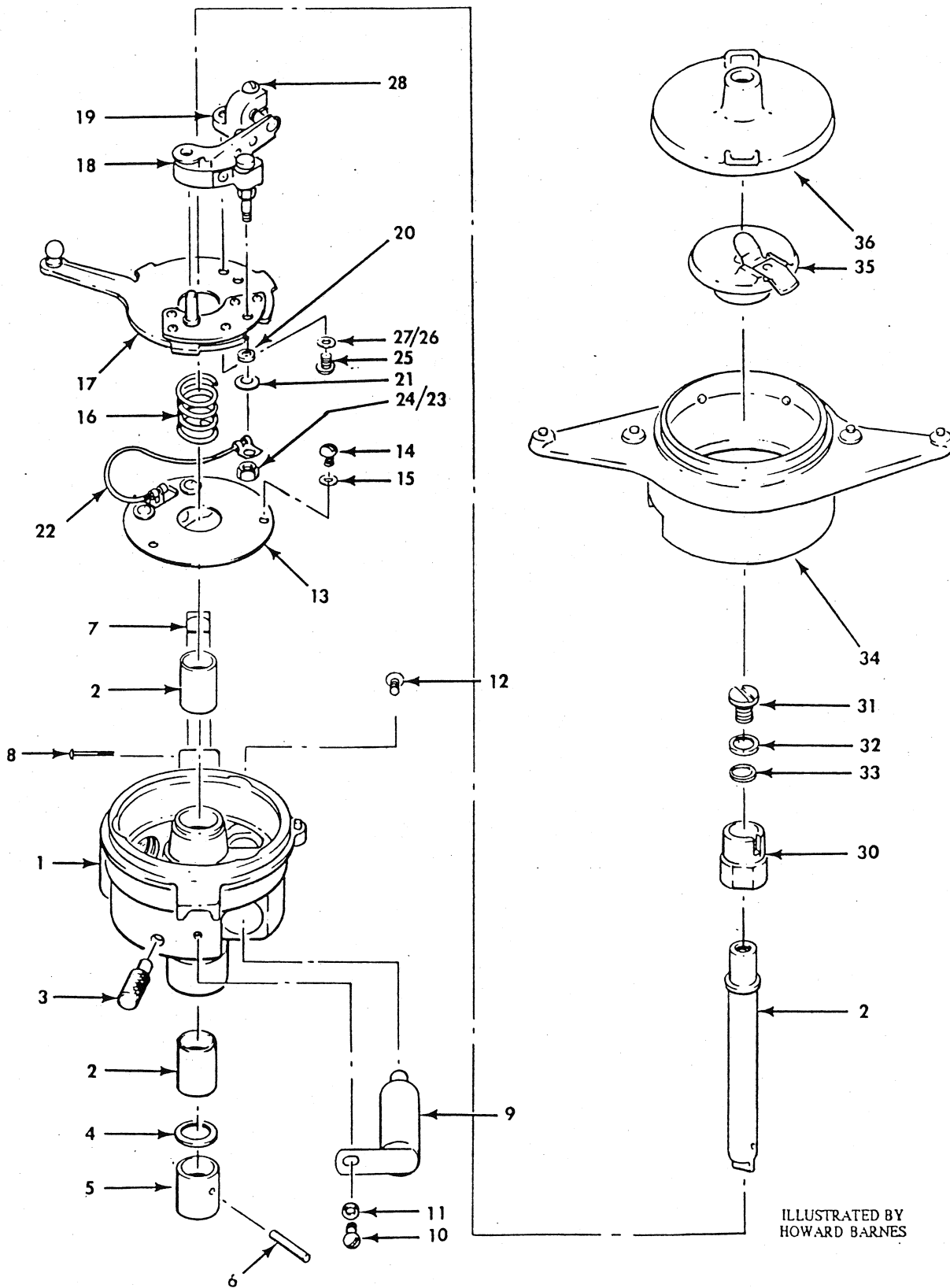
- 1) Wanted: 31 front bumper and brackets complete,
for Victoria.
Jud Palmer, 1186 N. California St., Orange, CA. 92667
Phone - 714-538-5507.
- 2) Wanted: Door hinges for Victoria in good condition. Contact,
Paul H. Miller, 50 Level Rd., Collegeville, PA. 19426.
Phone - 215-489-2083.
- 3) Wanted: Original wood pattern for Steelback Victoria rear
roof bow assembly (3 pieces) and dome light block. Leads
appreciated. Steve Cannon, 1418 NC 150 W. Summerfield, NC.
27358, Phone - 919-643-7373.
- 4) Wanted: Metal plate door sills for 31 Victoria (Murray
body). Contact: Dr. Kenneth C. Marshall, P.O. Box 537, Cedar
Hill, MO. 63016. Ph. 314-285-2378 and work 314-991-0697
1) I have for sale, two good right hand doors for Victoria.
Pages Model A Garage, Havenhill, NH. 03765
(603) 989-5562 & 989-5592.
- 5) WANTED - ORIGINAL Wood patterns for Leatherback rear
window. Also, need original patterns on wood for top and
body wood for Steelback Victoria. Can help you with your
wood or will buy good original patterns. Steve Cannon,
1418 NC 150 W., Summerfield, NC. 27358-(919) 643-7373.
- 6) WOOD - I will do your wood if you send the patterns.
Fred Steiber, 35 Canasawacta St., Norwich, NY. 13815
(607) 334-3089. He has the headen available.
- 7) WANTED - Drivers side front window regulator & channel
for a 1931 Victoria Steelback. David M. Clark, 307
Lilac, Blackfoot, Id. 83221, (208) 785-0816.
- 8) FOR SALE - Victoria Vison brackets and pants for same.
These brackets are an exact duplicate of the original and
the pants are interchangeable. Price is \$80.00 per set of
two. Contact: William H. Bond, 1040 Old Squaw Pass,
Evergreen, CO. 80439, ph. 303-670-3283.

VICTORIA ASSOCIATION NEWSLETTER

The International Model A Ford Victoria Association newsletter is a Body Style Chapter of the Model A Ford Club of America and a Region of the Model A Restorers Club. The purpose is to aid its members in the authentic restoration of this (Victoria) particular body style. To achieve this purpose the newsletter is published by the Editor on a completely volunteer basis. It is written, edited, typed printed and mailed from 68 Windjammer, Frisco, Tx. 75034. It is our intent to furnish you with as accurate information as possible. Reprint or quotes from this newsletter is granted, provided due credit is given.

MODEL A FORD DISTRIBUTOR ASSEMBLY

(P/N A-12100)

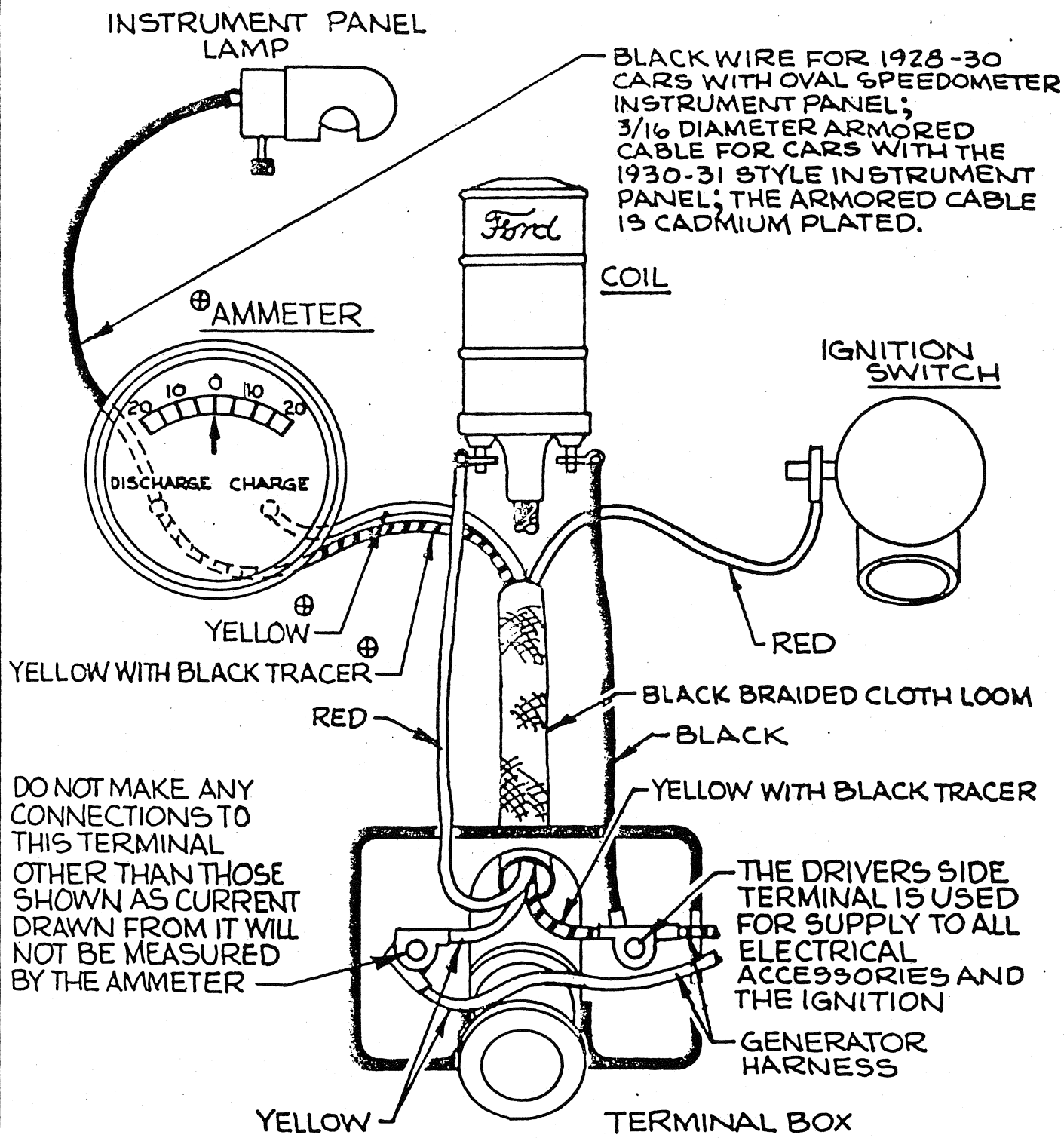


ILLUSTRATED BY
HOWARD BARNES

MODEL A FORD DISTRIBUTOR

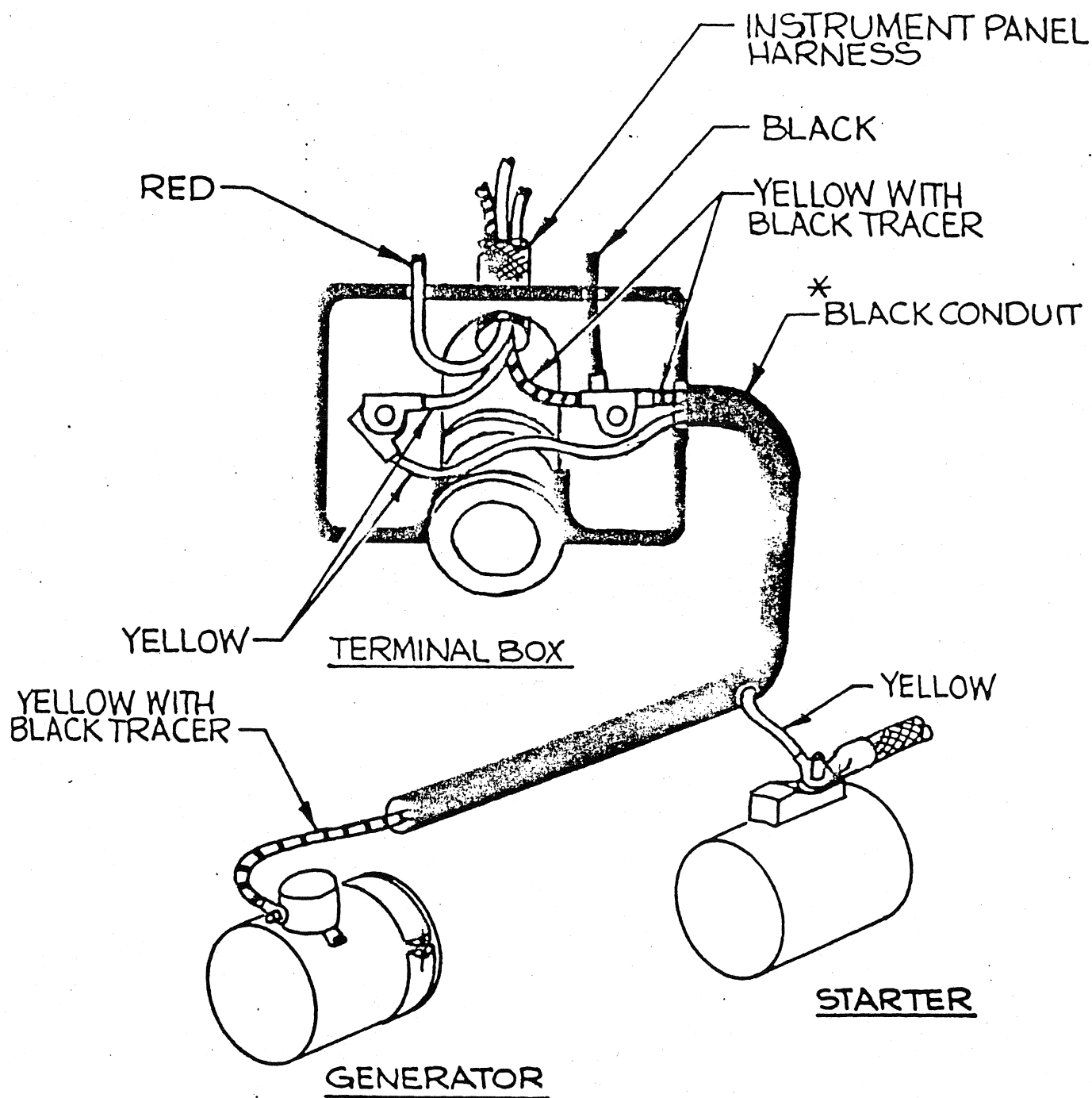
(P/N A-12100)

<u>INDEX NO.</u>	<u>PART NO.</u>	<u>NOMENCLATURE</u>
1	A-12130	Base Assembly
2	B-12132	Bushing
3	B-12135	Oiler
4	-	Fiber Washer - $1/2 \times 3/16 \times 3/4$ Plain
5	B-12195	Shaft Sleeve
6	72857-S	Sleeve Pin - $1/8 \times 13/16$ Plain Pin
7	B-12144	Clamp
8	A-22902	Clamp Rivet - $1/8 \times 15/16$ Oval Head Split Head (Plain Steel, Cadmium, Nickel, or Brass)
9	A-12300	Condensor
10	26457-S7	Roundhead Machine Screw - $8-32 \times 1/4$ Cadmium Plated
11	34842-S	Lockwasher - #8 Plain Finish
12	27053-S5	Roundhead Machine Screw - $10-32 \times 1/4$ Copper Plate
13	A-12148	Support Assembly Lower Plate
14	26457-S7	Roundhead Machine Screw - $8-32 \times 1/4$ Cadmium (2 Req'd)
15	34842-S	Lockwasher #8 Plain Finish (2 Req'd)
16	A-12137	Spring
17	A-12151	Plate and Insulator Assembly
18	A-12162	Breaker Arm Assembly
19	A-12160	Contact Screw Bracket
20	-	Steel Spacer (Same Thickness as Index No. 17)
21	-	Fiber Washer
22	-	Pigtail
23	34842-S	Lockwasher - Plain Finish
24	33941-S7	Hex Nut - $8-32 \times 5/16$ Cadmium
25	20116-S8	Roundhead Screw - $8-32 \times 5/16$, Zinc Plate (2 Req'd)
26	34701-S7	Washer - $5/32$ Plain (Goes with the Pivot Side of the Point Block)
27	22056	Lockwasher - #8 Plain Finish
28	31052-S7	Fillister Head Screw - $6-32 \times 7/16$ Cadmium
	-	Lockwasher - #6 Plain Finish
	-	Plain Flat Washer - $5/16$ Cadmium
29	A-12178	Shaft
30	A-12210	Cam
31	B-12211	Cam Screw
32	35356-S	Lockwasher $5/16$ - Plain Finish ($1/32 \times 17/32$ Special Lockwasher)
33	B-12213	Washer - $5/16$ ($1/32 \times 35/64$) Plain Finish
34	A-12105	Body
35	A-12200	Rotor
36	A-12115	Cap Assembly



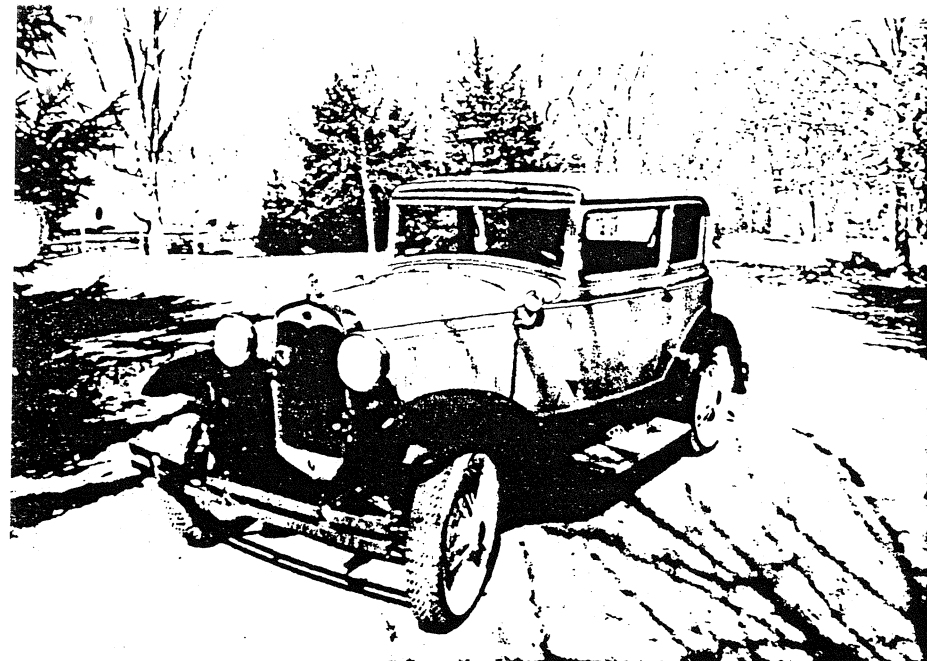
⊕. IF THE AMMETER INDICATES "CHARGE" WITH THE ENGINE OFF AND THE HEADLAMPS ON, REVERSE THE AMMETER CONNECTIONS; IT SHOULD INDICATE "DISCHARGE!"

1928-31 MODEL "A" FORD INSTRUMENT PANEL HARNESS INSTALLATION

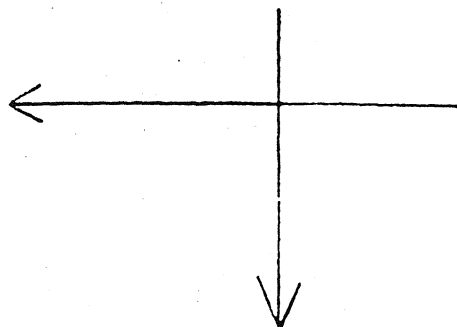


*. PRIOR TO FEBRUARY OF 1930 THE WIRE CONDUIT WAS A METAL TUBE. IN FEBRUARY OF 1930 THE CONDUIT WAS CHANGED TO A BLACK LACQUERED WOVEN CLOTH LOOM WHICH WAS USED THROUGHOUT THE REMAINDER OF MODEL "A" PRODUCTION. THE METAL CONDUIT FATIGUE CRACKED BECAUSE IT WAS CONNECTED TO BOTH THE ENGINE AND THE BODY.

1928-31 MODEL "A" FORD
GENERATOR HARNESS INSTALLATION

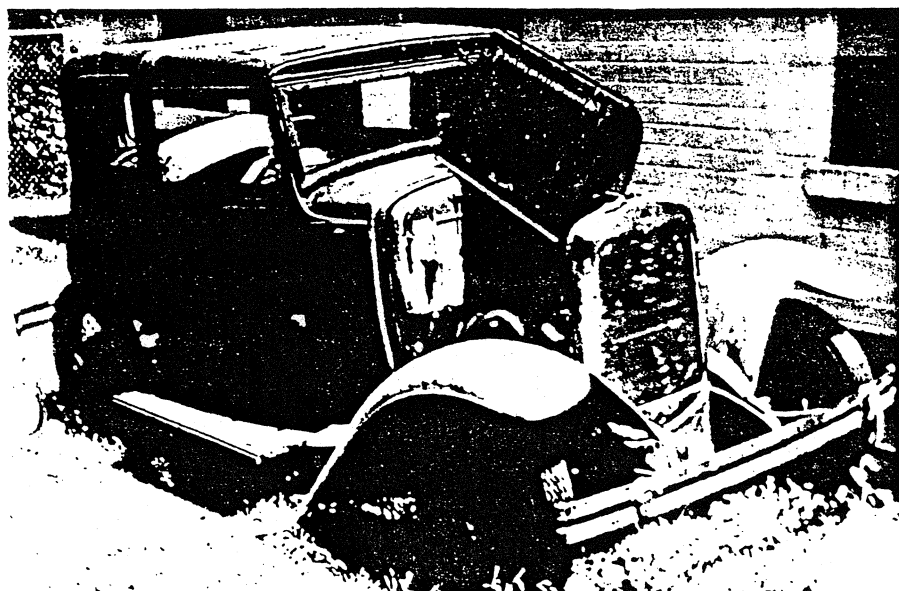
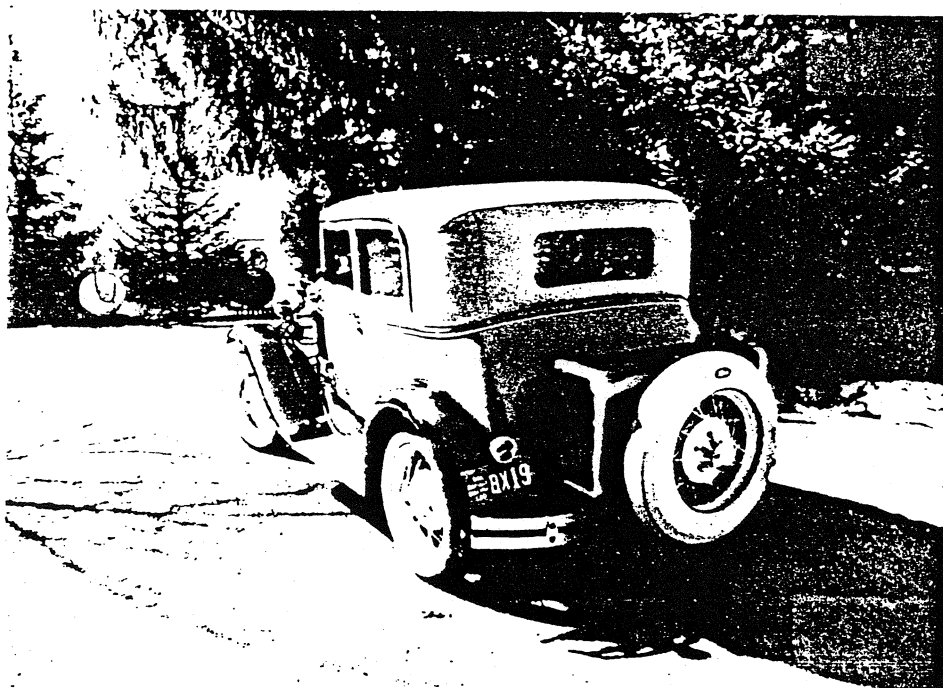


The Victoria Leatherback to the left and below belongs to Roger and Christine de Socarras. They live in Revere, Pa. and are new members.



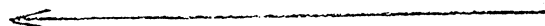
Please note the trunk and spare tire on the rear of the de Socarras Victoria.

I'm sure that you will find this is an unusual set up. They drive their Victoria a lot and will be at the MAFCA National at Sturbridge.

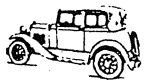


This Steelback Victoria is owned by Robert and Christi Anderson of Grand Rapids, Mich. Bob tells me that this is his next project and not to laugh.

Bob, my Victoria was a lot worse than yours and now it looks like new and will be shown at Sturbridge.



International
Model A Ford Victoria Association



68 WINDJAMMER
FRISCO, TEXAS 75034